

INSTALLATION

REPLACEMENT

BATTERY GUIDE CHICKLET

INSTALL MANUAL

This manual covers the replacement/upgrade and installation of a battery guide chicklet on Super Vac battery-powered ventilation fans.

Please consult your chicklet upgrade kit for parts.



To view installation video, [click here](https://bit.ly/upgrade-battery-chicklet). bit.ly/upgrade-battery-chicklet

TOOLS



Small Flat-Head
Screw Driver



Phillips-Head
Drill Bit



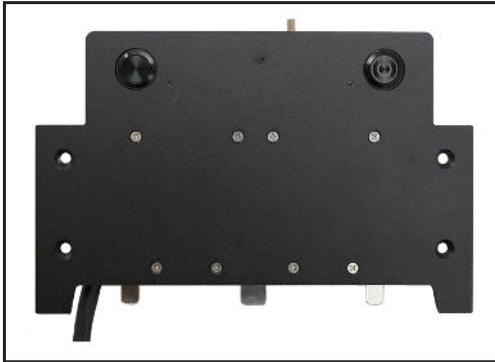
1/16 Allen
Wrench



Cordless Drill

STEP 1:

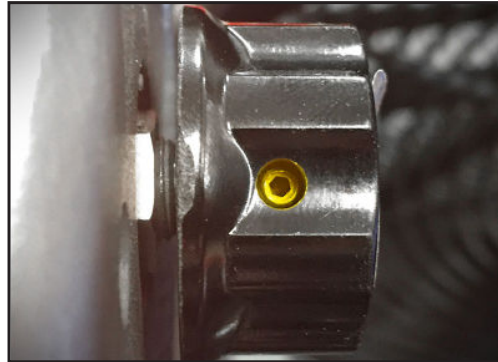
Remove label.



Remove label to gain access to faceplate screws.

STEP 2:

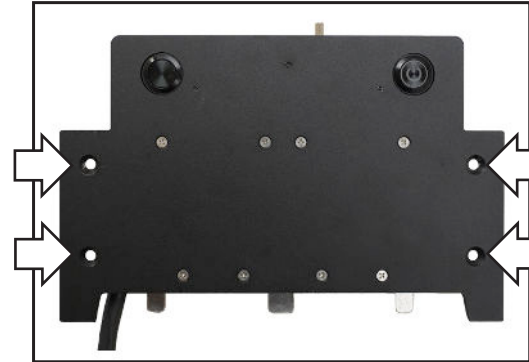
Remove potentiometer knob.



Remove potentiometer knob by unscrewing with 1/16 Allen Wrench.

STEP 3:

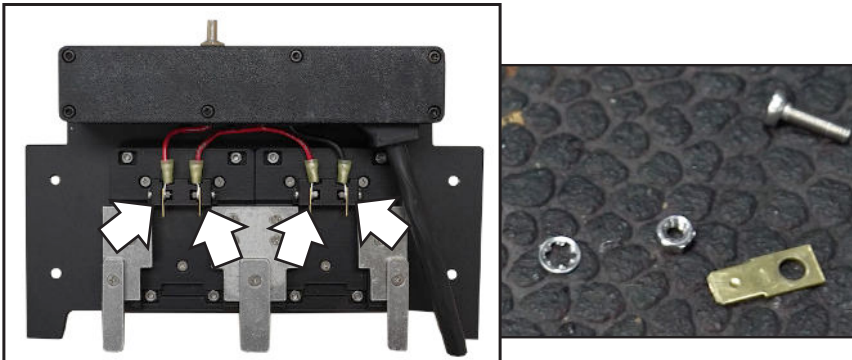
Remove outside screws.



Using a phillips head screw driver, remove the 4 outer most screws. Once screws are removed, take off panel to gain access to the inside.

STEP 4:

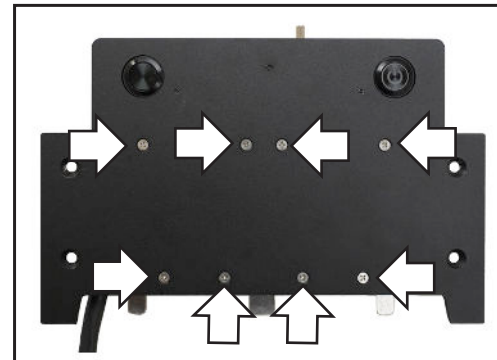
Disconnect 4 wires



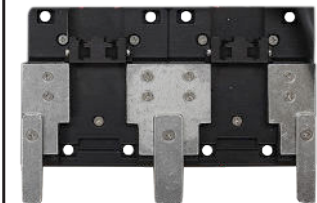
On the inside, disconnect the 3 red wires and 1 black wire. (Not the large power cable.) Keep tab, lock washer, nut and a screw for each wire connection point.

STEP 5:

Remove 8 inner screws.



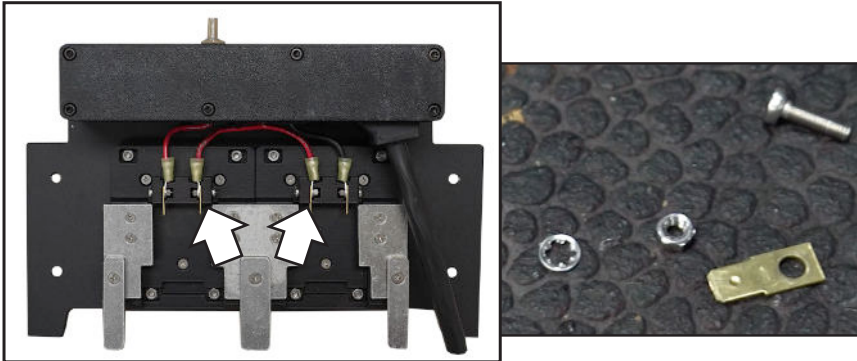
Using a phillips head screw driver, remove the 8 inner most screws. Once screws are removed, take off panel to gain access to the inside.



With 8 inner screws taken out, chicklet plate can now be removed and swapped out for the upgraded version.

STEP 6:

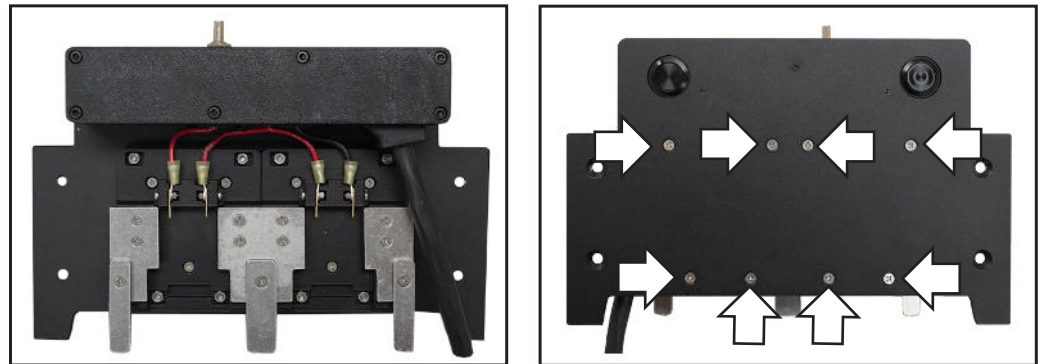
Reassemble



Starting with the short red wire, reconnect wires to the chicklet plate. Screw to connector, to lock washer and then to nut. Then proceed by following these steps in reverse order.

STEP 7:

Use new longer supplied screws.



Use the 8 new longer screws when re-attaching chicklet baseplate onto the face plate.