

SUPERVAC



i-Line Industrial Fans & Accessories

supervac.com

Blowers/Exhausters

F Series.....4

HF Series.....5

VF Series.....5

AF Series.....5

PPVs

Battery.....6

Electric.....7

Gas.....7

Specialty

Large-Scale Fans.....8

Nano Series.....8

Mister Fan.....8

Custom Fans.....9

Aircraft Brake Cooling Fan.....9

Mounting and Accessories9

Confined Space Ventilation

Nano Confined Space Fans.....10

Ducts.....10-11

Adapters.....11

TIME-TESTED
INDUSTRIAL
VENTILATION

- ✓ Airports
- ✓ Chemical Plants
- ✓ Refineries
- ✓ Steel Mills
- ✓ Ship Hulls
- ✓ Utility Companies

Ventilation is important in most every industrial environment. By exhausting contaminated air away from the work area and replacing it with clean air, companies can control the exposure of flammable vapors and airborne toxic chemicals to their crews. Machine and workplace cooling is also important in maintaining expensive equipment, controlling workable environments and reducing overhead costs.

With more than 50 years of experience in the industrial ventilation industry, Super Vac manufactures time-tested, industrial-quality products. We offer a full line of ventilation fans and environmental controlling products with accessories, as well as custom products built for your specific ventilation needs.

The Super Vac Advantage

What sets Super Vac apart? The answer — our blades. The blade is arguably the most important component of cooling and ventilation products, and for that reason, Super Vac has its own foundry where we create our own patented blade, designed to ensure ejected air and toxic fumes will not re-enter the workspace. Our blades use only the toughest aircraft alloys to ensure they are second to none.



WHICH FAN IS RIGHT FOR YOU?



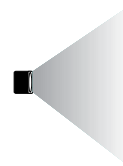
Choose from our **Blower/Exhausters** (Page 4-5) OR select from the **Super Vac PPV** lineup (Page 6-7)



Blower/exhausters have a more concise, direct air flow thanks to Super Vac's patented spiraled blade. These fans can perform both negative and positive pressure ventilation ideal for:

- ✓ Confined space ventilation
- ✓ Ducted ventilation
- ✓ Cooling machines or workplace areas

Available motors: TEAO, 3-Phase, Hazardous Location, Variable Speed and Compressed Air



PPVs feature a chopper blade, which can push a wider mass of air. These fans are able to place the right amount of pressure in the area to let contaminated air escape through strategically placed exit points as clean air enters the space. PPVs are ideal for:

- ✓ General and large area ventilation

Available motors/engines: TEAO, Hazardous Location, Variable Speed and Gas Engines

WHICH MOTOR/ENGINE IS RIGHT FOR YOU?



TEAO Motors

TEAO (Totally Enclosed Air Over) motors are designed to be used solely in the air stream of the fan or blower they are driving, which in turn cools the motor. TEAO motors have a dust-tight cover and an aerodynamic body. Super Vac offers single, three-phase and variable speed TEAO.



EVS (Variable Speed)

The EVS variable-speed provides precise control of air movement and up to 35% more airflow than single-speed electric motors. The EVS is the only variable-speed fan in the industry that will run on GFCI circuits and new hydraulic generators without surging at high speed.



Hazardous Location

Super Vac offers an electric hazardous location motor on both PPVs and blowers/exhausters. These units feature the industry's highest level of protection and is listed for Class 1 Group D environments, pairing an explosion-proof motor with an explosion-proof switch.



Pneumatic

Also ideal for hazardous locations, Super Vac offers a pneumatic motor in the AF Series blowers/exhausters (Page 5). These units feature a compressed air motor, making these fans intrinsically safe for environments. This motor comes with its own filter, gauge and oiler.



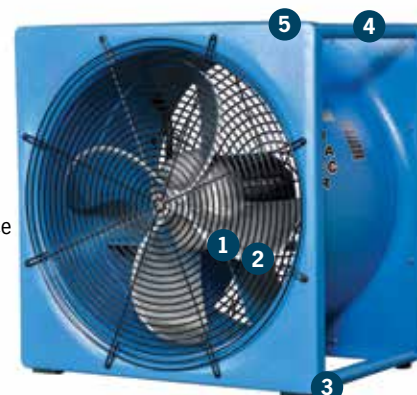
Gas Engines

The Super Vac PPV is available with a Honda or Briggs & Stratton gas engine, ranging in horsepower from 3.5-10 HP. This gas option is ideal for industrial organizations that may not have electricity easily or readily available to power their ventilation fan.

INDUSTRIAL BLOWERS / EXHAUSTERS

Super Vac's F industrial blowers/exhausters provide unmatched durability. The entire frame is constructed of steel, and the patented 4-tip recurved aluminum blade is precision balanced for maximum output. Available motors: single speed, single high speed, variable speed and pneumatic.

- 1 **Patented 4-Tip Recurved Aluminum Blade:** Creates a tight spiral of air to eject smoke and fumes away from the building; aluminum holds up better than plastic in high heat
- 2 **Precision-Balanced Blade:** Maximizes output
- 3 **Heavy-Duty Rubber Feet:** Friction keeps fan in place
- 4 **4 Carry Handles:** Makes transportation easy with one or two people
- 5 **Front and Rear Guards:** Prevents accidental contact with key components



**5-YEAR
WARRANTY**

F SERIES Single-Speed Motor

The F Series is a popular ventilation choice thanks to its low-noise, high-output industrial design. The F Series comes in four different sizes; the larger 20" or 24" are perfect for cooling machines or ventilating large spaces. Hazardous-location and three-phase motors are available.

Standard Motors	Model	Size	Weight		Motor	RPM	Start	Run	Output
	F124i	12"	40 lbs 18 kg	15.5" x 15" x 13" 394 x 381 x 330 mm	Bluffton, single speed, TEAO, 1/3 HP, 50/60Hz, 115/230V AC	1,725	2,000 w 15-amp circuit	800 w	2,100 cfm 3,570 cmh
	F164i	16"	44 lbs 20 kg	19.25" x 18.75" x 13" 489 x 477 x 330 mm	Bluffton, single speed, TEAO, 1/3 HP, 50/60Hz, 115/230V AC	1,725	2000 w 15-amp circuit	700 w	5,200 cfm 8,835 cmh
	F200i	20"	85 lbs 38.5 kg	25.5" x 24.75" x 16.25" 648 x 629 x 413 mm	Bluffton, single speed, TEAO, 1 HP, 50/60Hz, 115/230V AC	1,725	4,000 w 15-amp circuit	1,500 w	9,500 cfm 16,140 cmh
	F244i	24"	110 lbs 50 kg	28.5" x 28" x 16.25" 724 x 711 x 477 mm	Bluffton, single speed, TEAO, 1-1/2 HP, 50/60Hz, 115/230V AC	1,725	6,000 w 20-amp circuit	2,100 w	11,800 cfm 20,050 cmh

Hazardous Location Motors	Model	Size	Weight		Motor	RPM	Start	Run	Output
	F124Ei	12"	42 lbs 19 kg	15.5" x 15" x 13" 394 x 381 x 330 mm	Bluffton, single speed, hazardous location rated for Class 1 Group D, 1/3 HP, 50/60Hz, 115/230V AC	1,725	2,000 w 15-amp circuit	800 w	2,100 cfm 3,570 cmh
	F164Ei	16"	49 lbs 22 kg	19.25" x 18.75" x 13" 489 x 477 x 330 mm	Bluffton, single speed, hazardous location rated for Class 1 Group D, 1/3 HP, 50/60Hz, 115/230V AC	1,725	2,000 w 15-amp circuit	700 w	5,200 cfm 8,835 cmh
	F200Ei	20"	93 lbs 42 kg	25.5" x 24.75" x 16.25" 648 x 629 x 413 mm	Bluffton, single speed, hazardous location rated for Class 1 Group D, 1 HP, 50/60Hz, 115/230V AC	1,725	4,000 w 15-amp circuit	1,500 w	9,500 cfm 16,140 cmh
	F244Ei	24"	115 lbs 52 kg	28.5" x 28" x 16.25" 724 x 711 x 477 mm	Bluffton, single speed, hazardous location rated for Class 1 Group D, 1-1/2 HP, 50/60Hz, 115/230V AC	1,725	6,000 w 20-amp circuit	2,100 w	11,800 cfm 20,050 cmh

3-Phase Motors	Model	Size	Weight		Motor	RPM	Start	Run	Output
	F164Gi	16"	44 lbs 20 kg	19.25" x 18.75" x 13" 489 x 477 x 330 mm	RAE, TEAO, variable speed, 1/3 HP, 50/60Hz, 230/460V AC	1,750	2,000 w 15-amp circuit	800 w	5,900 cfm 10,025 cmh
	F164Ti	16"	49 lbs 22 kg	19.25" x 18.75" x 13" 489 x 477 x 330 mm	Bluffton, variable speed, hazardous location rated for Class 1 Group D, 1/3 HP, 50/60Hz, 230/460V AC	1,750	2,000 w 15-amp circuit	700 w	5,900 cfm 10,025 cmh
	F200Gi	20"	85 lbs 38.5 kg	25.5" x 24.75" x 16.25" 648 x 629 x 413 mm	RAE, TEAO, variable speed, 1 HP, 50/60Hz, 230/460V AC	1,750	4,000 w 15-amp circuit	1,500 w	9,500 cfm 16,140 cmh
	F200Ti	20"	115 lbs 52 kg	25.5" x 24.75" x 16.25" 648 x 629 x 413 mm	Bluffton, variable speed, hazardous location rated for Class 1 Group D, 1 HP, 50/60Hz, 230/460V AC	1,750	4,000 w 15-amp circuit	2,100 w	9,500 cfm 16,140 cmh
	F244Gi	24"	110 lbs 50 kg	28.5" x 28" x 16.25" 724 x 711 x 477 mm	RAE, TEAO, variable speed, 1.5 HP, 50/60Hz, 230/460V AC	1,750	6,000 w 20-amp circuit	2,100 w	11,800 cfm 20,050 cmh
	F244Ti	24"	115 lbs 52 kg	28.5" x 28" x 16.25" 724 x 711 x 477 mm	Bluffton, variable speed, hazardous location rated for Class 1 Group D, 1.5 HP, 50/60Hz, 230/460V AC	1,750	6,000 w 20-amp circuit	2,100 w	11,800 cfm 20,050 cmh



AF Series

VF Series

F Series

HF Series with optional tilt stand

HF SERIES

Single-Speed Motor

The HF Series is the most powerful single-speed fan on the industrial market and can easily be used for negative or positive pressure ventilation. Running at 3,450 RPM, the HF Series has the power to force or pull air deep into a structure or underground vault. This series is also available in a hazardous location model.

Standard Motors	Model	Size	Weight		Motor	RPM	Start	Run	Output
	HF124i	12"	40 lbs 18 kg	15.5" x 15" x 13" 394 x 381 x 330 mm	Bluffton, single speed, TEAO, 1/2 HP, 50/60Hz, 115/230V AC	3,450	2,000 w 15-amp circuit	800 w	3,700 cfm 6,285 cmh
	HF164i	16"	59 lbs 27 kg	19.25" x 18.75" x 13" 489 x 477 x 330 mm	Bluffton, single speed, TEAO, 1-1/2 HP, 50/60Hz, 115/230V AC	3,450	6,000 w 20-amp circuit	2,100 w	9,620 cfm 16,345 cmh

Hazardous Locations	Model	Size	Weight		Motor	RPM	Start	Run	Output
	HF124Ei	12"	42 lbs 19 kg	15.5" x 15" x 13" 394 x 381 x 330 mm	Bluffton, single speed, hazardous location rated for Class 1 Group D, 1/2 HP, 50/60Hz, 115/230V AC	3,450	2,000 w 15-amp circuit	800 w	3,700 cfm 6,285 cmh
	HF164Ei	16"	63 lbs 28.5 kg	19.25" x 18.75" x 13" 489 x 477 x 330 mm	Bluffton, single speed, hazardous location rated for Class 1 Group D, 1-1/2 HP, 50/60Hz, 115/230V AC	3,450	6,000 w 20-amp circuit	2,100 w	9,620 cfm 16,345 cmh

Note: HF164i requires a 20-amp circuit to start and run on 115V.

VF SERIES

Variable-Speed Motor

The VF Series provides precise air control thanks to its variable-speed motor. The VF Series moves 30% more air flow than single-speed electric fans. Featuring full digital controls, fan speeds can be adjusted easily and reversed. The VF Series is compatible with GFCI circuits, making these units highly versatile.

Standard Motors	Model	Size	Weight		Motor	RPM	Start	Run	Output
	VF124i	12"	40 lbs 18 kg	15.5" x 15" x 13" 394 x 381 x 330 mm	RAEO, TEAO, variable speed, 1 HP, 50/60Hz, 115/230V AC	2,500	2,000 w 15-amp circuit	800 w	3,100 cfm 5,265 cmh
	VF164i	16"	52 lbs 23.5 kg	19.25" x 18.75" x 13" 489 x 477 x 330 mm	RAE, TEAO, variable speed, 1 HP, 50/60Hz, 115/230V AC	2,500	2,000 w 15-amp circuit	800 w	5,900 cfm 10,025 cmh
	VF200i	20"	88 lbs 40 kg	25.5" x 24.75" x 16.25" 648 x 629 x 413 mm	RAE, TEAO, variable speed, 1 HP, 50/60Hz, 115/230V AC	2,500	2,000 w 15-amp circuit	800 w	9,800 cfm 16,650 cmh

AF SERIES

Compressed Air Motor

The AF Series features a pneumatic air motor, making this blower/exhauster intrinsically safe for environments with unknown gases. Complete with its own filter, gauge and oiler, the AF Series has everything you need to move lots of air without a lot of air usage.

Pneumatic Motors	Model	Size	Weight		Motor	RPM	Run	Output
	AF124i	12"	39 lbs 18 kg	15.5" x 15" x 13" 394 x 381 x 330 mm	Pneumatic, 1/2 HP	2,000	80 PSI - 27 cfm	3,800 cfm 6,455 cmh
	AF164i	16"	45 lbs 20.5 kg	19.25" x 18.75" x 13" 489 x 477 x 330 mm	Pneumatic, 1-1/2 HP	3,600	100 PSI - 75 cfm	9,600 cfm 16,310 cmh
	AF200i	20"	60 lbs 27 kg	25.5" x 24.75" x 16.25" 648 x 629 x 413 mm	Pneumatic, 1-1/2 HP	3,600	100 PSI - 75 cfm	9,800 cfm 16,650 cmh
	AF244i	24"	105 lbs 48 kg	28.5" x 28" x 16.25" 724 x 711 x 477 mm	Pneumatic, 5 HP	2,250	100 PSI - 100 cfm	14,200 cfm 24,125 cmh

U.S. PATENT NOS. 11,131,321 AND 11,795,970 AND PATENTS PENDING

THE INDUSTRY'S MOST VERSATILE BATTERY FAN

Never in industry's history has one fan worked with your other battery-operated tools. Until now. The all-new Super Vac 16", 18" and 20" variable-speed battery fans, which work with your choice of dual DeWalt® batteries*, Milwaukee® or Makita® batteries batteries, are the most compatible PPVs on the market, perfectly sized for quick operations and confined spaces that are void of hazardous gases.



5-YEAR WARRANTY

3-YEAR WARRANTY ON MOTOR/BATTERIES



The 16" — Two frame designs!

16" Blades - H x W x D: 22.75" x 23" x 12" - 580 mm x 585 mm x 305 mm

Models	Weight with Batteries	Motor	Runtime at Max Airflow	Setback For Output Rating	Angle For Output Rating	Output
V16-BD-SP (DeWalt FLEXVOLT)	45 lbs 20 kg	Variable-Speed DC with Standard 120-240V AC	9.0Ah (2) - 35 minutes 12.0Ah (2) - 40 minutes	14 ft 4.3 m	5°	9,816 cfm 16,677 cmh
V16-BL-SP (Milwaukee M18)	45 lbs 20 kg	Variable-Speed DC with Standard 120-240V AC	XC 8.0Ah (2) - 25 minutes HD12.0Ah (2) - 50 minutes	16 ft 4.9 m	10°	9,131 cfm 15,514 cmh
V16-BW-SP (Milwaukee M28)*	45 lbs 20 kg	Variable-Speed DC with Standard 120-240V AC	XC 3.0Ah (2) - 20 minutes XC 5.0Ah (2) - 40 minutes	14 ft 4.3 m	10°	8,000 cfm 13,592 cmh
V16-BK-SP (Makita XGT)	46 lbs 21 kg	Variable-Speed DC with Standard 120-240V AC	4.0Ah (2) - 35 minutes 5.0Ah (2) - 45 minutes 8.0Ah (2) - 70 minutes**	14 ft 4.3 m	5°	8,900 cfm 15,120 cmh

Add -WH to model to upgrade to Wheel/Handle design. Note: Add ~8 lbs. (4 kg) to -WH models; -WH models are 24.25" x 23.75" x 12.25". **Makita XGT 8.0Ah battery available for V16-BK-SP-WH model but not for V16-BK-SP.



The 18" — Made to maneuver

18" Blades - H x W x D: 25.50" x 26" x 12.25" - 650 mm x 660 mm x 315 mm

Models	Weight With Batteries	Motor	Runtime at Max Airflow	Setback For Output Rating	Angle For Output Rating	Output
V18-BD-SP (DeWalt FLEXVOLT)	58 lbs 26 kg	Variable-Speed DC with Standard 120-240V AC	9.0Ah (2) - 35 minutes 12.0Ah (2) - 40 minutes	15 ft 4.6 m	10°	10,840 cfm 18,417 cmh
V18-BL-SP (Milwaukee M18)	58 lbs 26 kg	Variable-Speed DC with Standard 120-240V AC	XC 8.0Ah (2) - 30 minutes HD 12.0Ah (2) - 40 minutes	15 ft 4.6 m	12°	9,618 cfm 16,341 cmh
V18-BW-SP (Milwaukee M28)*	56 lbs 25 kg	Variable-Speed DC with Standard 120-240V AC	XC 3.0Ah (2) - 20 minutes XC 5.0Ah (2) - 40 minutes	15 ft 4.6 m	10°	9,000 cfm 15,291 cmh
V18-BK-SP (Makita XGT)	56 lbs 25 kg	Variable-Speed DC with Standard 120-240V AC	4.0Ah (2) - 35 minutes 5.0Ah (2) - 45 minutes 8.0Ah (2) - 70 minutes	15 ft 4.6 m	10°	9,500 cfm 16,140 cmh

DeWalt batteries required in pairs. Use only batteries' proprietary charging equipment to charge batteries. 120-240V AC operation is standard (with optional delete). AC (shore power) needed to run the fan = 1 kW. Conservative run times are based on humidity, temperature, elevation and battery condition with a pair of batteries inserted. Delete -SP from model to remove standard shorepower.

* For M28 batteries or chargers, please see your Genesis, TNT or Weber dealer.



20" blade fans also available for maximum output!



For overhead attacks



For positive tilt attacks



Storage angle



For negative tilt attacks



For manhole attacks

Positive Pressure Ventilation (PPV) techniques utilize a wider airflow path than industrial blower/exhausters to help push contaminated air through strategically placed exit points and in turn allow clean air to enter into the space. Super Vac offers a full lineup of electric- and gas-powered PPVs for your unique ventilation needs.



ELECTRIC PPVS

	Model	Size	Weight	Dimensions	Motor	RPM	Start	Run	Setback	Angle	Output
Standard Motors	716-E2i	16"	68 lbs 31 kg	20" x 20.5" x 16" 508 x 521 x 406 mm	Bluffton, single speed, 1HP, 50/60Hz, 115/230V AC	1,750	4,000 w 15-amp circuit	1,500 w	6 ft 1.8 m	18°	5,890 cfm 10,007 cmh
	718-E2i	18"	82 lbs 37 kg	22" x 20.5" x 16" 559 x 660 x 495 mm	Bluffton, single speed, 1HP, 50/60Hz, 115/230V AC	1,750	4,000 w 15-amp circuit	1,500 w	6 ft 1.8 m	18°	6,378 cfm 10,836 cmh
	720-E2i	20"	88 lbs 40 kg	25.5" x 26" x 19.5" 648 x 660 x 495 mm	Bluffton, single speed, 1HP, 50/60Hz, 115/230V AC	1,750	4,000 w 15-amp circuit	1,500 w	6 ft 1.8 m	18°	9,007 cfm 15,302 cmh
	724-E2i	24"	104 lbs 47.5 kg	28" x 29.5" x 21" 711 x 749 x 533 mm	Bluffton, single speed, 1HP, 50/60Hz, 115/230V AC	1,750	4,000 w 15-amp circuit	1,500 w	6 ft 1.8 m	18°	13,320 cfm 22,630 cmh
Hazardous Location Motors	716-EXPi	16"	78 lbs 35.5 kg	20" x 20.5" x 16" 508 x 521 x 406 mm	Bluffton, single speed – hazardous location rated for Class 1 Group D, 1 HP, 50/60Hz, 115/230V AC	1,750	4,000 w 15-amp circuit	1,500 w	6 ft 1.8 m	18°	5,890 cfm 10,007 cmh
	718-EXPi	18"	92 lbs 42 kg	22" x 20.5" x 16" 559 x 660 x 495 mm	Bluffton, single speed – hazardous location rated for Class 1 Group D, 1 HP, 50/60Hz, 115/230V AC	1,750	4,000 w 15-amp circuit	1,500 w	6 ft 1.8 m	18°	6,378 cfm 10,836 cmh
	720-EXPi	20"	98 lbs 45 kg	25.5" x 26" x 19.5" 648 x 660 x 495 mm	Bluffton, single speed – hazardous location rated for Class 1 Group D, 1 HP, 50/60Hz, 115/230V AC	1,750	4,000 w 15-amp circuit	1,500 w	6 ft 1.8 m	18°	9,007 cfm 15,302 cmh
	724-EXPi	24"	114 lbs 52 kg	28" x 29.5" x 21" 711 x 749 x 533 mm	Bluffton, single speed – hazardous location rated for Class 1 Group D, 1 HP, 50/60Hz, 115/230V AC	1,750	4,000 w 15-amp circuit	1,500 w	6 ft 1.8 m	18°	13,320 cfm 22,630 cmh
Variable Speed Motors	716-EVSi	16"	72 lbs 33 kg	20" x 20.5" x 16" 508 x 521 x 406 mm	RAE, TEAO, variable speed, 1.5 HP, 50/60Hz, 115/230V AC	2,400	2,000 w 15-amp circuit	1,500 w	6 ft 1.8 m	18°	9,950 cfm 16,900 cmh
	718-EVSi	18"	86 lbs 39 kg	22" x 20.5" x 16" 559 x 660 x 495 mm	RAE, TEAO, variable speed, 1.5 HP, 50/60Hz, 115/230V AC	2,400	2,000 w 15-amp circuit	1,500 w	6 ft 1.8 m	18°	10,744 cfm 18,254 cmh
	720-EVSi	20"	92 lbs 42 kg	25.5" x 26" x 19.5" 648 x 660 x 495 mm	RAE, TEAO, variable speed, 1.5 HP, 50/60Hz, 115/230V AC	2,400	2,000 w 15-amp circuit	1,500 w	6 ft 1.8 m	18°	13,788 cfm 23,426 cmh
	724-EVSi	24"	108 lbs 49 kg	28" x 29.5" x 21" 711 x 749 x 533 mm	RAE, TEAO, variable speed, 1.5 HP, 50/60Hz, 115/230V AC	2,400	2,000 w 15-amp circuit	1,500 w	6 ft 1.8 m	18°	16,370 cfm 27,815 cmh

GAS PPVS

	Model	Size	Weight	Dimensions	Motor	Displacement	RPM	Setback	Angle	Output
Briggs Vanguard	716G4i-B	16"	68 lbs 31 kg	20" x 20.5" x 16" 508 x 521 x 406 mm	Vanguard by Briggs & Stratton	127 cc	3,450	6 ft 1.8 m	18°	9,940 cfm 16,890 cmh
	718G4i-B	18"	84 lbs 38 kg	22" x 20.5" x 16" 559 x 660 x 495 mm	Vanguard by Briggs & Stratton	205 cc	3,770	6 ft 1.8 m	18°	14,860 cfm 25,247 cmh
	720G4i-B	20"	94 lbs 43 kg	25.5" x 26" x 19.5" 648 x 660 x 495 mm	Vanguard by Briggs & Stratton	205 cc	3,385	6 ft 1.8 m	18°	17,235 cfm 29,282 cmh
	724G4i-B	24"	120 lbs 55 kg	28" x 29.5" x 21" 711 x 749 x 533 mm	Vanguard by Briggs & Stratton	306 cc	3,245	6 ft 1.8 m	18°	21,100 cfm 35,850 cmh
Honda	716G4i-H	16"	74 lbs 34 kg	20" x 20.5" x 16" 508 x 521 x 406 mm	Honda GX120	118 cc	3,530	6 ft 1.8 m	18°	11,740 cfm 19,945 cmh
	718G4i-H	18"	86 lbs 39 kg	22" x 20.5" x 16" 559 x 660 x 495 mm	Honda GX200	196 cc	3,535	6 ft 1.8 m	18°	15,168 cfm 25,770 cmh
	720G4i-H	20"	96 lbs 44 kg	25.5" x 26" x 19.5" 648 x 660 x 495 mm	Honda GX200	196 cc	3,350	6 ft 1.8 m	18°	18,182 cfm 30,891 cmh
	724G4i-H	24"	134 lbs 61 kg	28" x 29.5" x 21" 711 x 749 x 533 mm	Honda GX270	270 cc	3,435	6 ft 1.8 m	18°	20,920 cfm 35,545 cmh
	730G4i-H	30"	163 lbs 74 kg	39" x 37" x 27.5" 991 x 940 x 699 mm	Honda G390	389 cc	3,220	6 ft 1.8 m	18°	26,849 cfm 45,616 cmh
Commercial Honda	716GCI	16"	70 lbs 32 kg	20" x 20.5" x 16" 508 x 521 x 406 mm	Honda GC160	160 cc	3,775	6 ft 1.8 m	18°	10,230 cfm 17,380 cmh
	718GCI	18"	78 lbs 35.5kg	22" x 20.5" x 16" 559 x 660 x 495 mm	Honda GC160	160 cc	3,360	6 ft 1.8 m	18°	13,223 cfm 22,466 cmh
	720GCI	20"	88 lbs 40 kg	25.5" x 26" x 19.5" 648 x 660 x 495 mm	Honda GC160	160 cc	3,185	6 ft 1.8 m	18°	15,499 cfm 26,248 cmh

SVU LARGE-SCALE FAN



See this product in action
at bit.ly/svu-operation

**1-YEAR
WARRANTY**



The SVU is the most versatile, large-scale positive pressure ventilator in the industrial/manufacturing industry. With an array of configurations, this PPV is perfect for ventilating airport terminals, large warehouse and commercial structures.

- 1 6-Point Carbon Fiber Blade:**
48" (1,219 mm) in diameter
- 2 Choice of Direct-Drive Engine:**
 - ◊ Kubota 3.8L Gasoline Engine
Performance: 87 HP (65kw)
Fuel Consumption: 8 gph (30 L/hr)
Fuel Tank Capacity: 18 g (68 L)
 - ◊ Cummins 3.8L Diesel Engine
Performance: 132 HP (99 kw)
Fuel Consumption: 7.4 gph (28 L/hr)
Fuel Tank Capacity: 18 g (68 L)
- 3 Rotate, Raise and Tilt:** The Electric Turntable rotates the fan up to 270°; the Scissor Lift extends the SVU up to 65' in the air and tilts 20° up and down
- 4 Mounting Options:** Choose from Skid Unit, Custom Trailer, Truck or Flatbed Trailer
- 5 Optional Accessories:** Mist Ring provides 30 GPM at 60 psi, while optional ducting and LED lights add even more versatility

Reduce Manufacturing Downtime During a Ventilation Emergency:

Downtime can adversely affect a facility, costing a company \$2,500-\$5,000 per inoperable minute, or upwards of: \$5,000 per minute, \$300,000 per hour, \$2.4 million per day.

This large industrial fan produces a 200,000 cfm output to ventilate large structures in a fraction of the time.

DIESEL POWERED - H x W x D: 82" x 70" x 42" - 2,090 mm x 1,780 mm x 1,070 mm

Model	Weight*	Engine	Displacement	RPM	Output
SVU-DD-50	1,850 lbs 839 kg	Cummins 3.8L Diesel	3.8L	2,450	200,000 cfm 339,800 cmh

* Without trailer

GAS POWERED - H x W x D: 70" x 70" x 42" - 1,780 mm x 1,780 mm x 2,720 mm

Model	Weight*	Engine	Displacement	RPM	Output
SVU-50	1,540 lbs 703 kg	Kubota 3.8L Gas	3.5L	2,600	200,000 cfm 339,800 cmh

* Without trailer

MISTER FAN

The mister fan produces a cooling mist that reduces air temperature through evaporation. Unlike other misting units that can only be used a few times, this fan continues to reduce the effect of heat for years. Perfect for increasing comfort during extended summertime operations.



Model	Weight	Motor	RPM	Start	Run	Output
F164Mi	41 lbs 18.5 kg	Bluffton, single speed, TEAO, 1/3 HP, 50/60Hz, 115/230V	1,725	2,000 w 15-amp circuit	700 w	5,200 cfm 8,835 cmh

Requires 2g/hr water supply via garden hose or auxiliary line to produce mist through three built-in misting nozzles



HEAT PAC 25

The HeatPac25 provides fresh, warm air at a temperature rise of 80° over ambient. Featuring an 8" blower and CGA-approved heater, the unit is portable and connects to a standard propane tank. The supplied 25' duct allows crews to deliver 70,000 BTUs of heat for a 10-hour period.

Model	Requirements	Height	Width	Depth	Weight	Output
HEATPAC 25	Propane - 2 lbs/hour	15.25" 387 mm	33" 838 mm	13.5" 342 mm	50 lbs 23 kg	80° F of temp rise @ 500 cfm (850 cmh)

CUSTOM SOLUTIONS

Not all ventilation scenarios are the same, and sometimes, complex issues require custom solutions. That's where Super Vac R&D department comes in, backed by a team of engineers, to help solve your cooling and ventilation challenges.



The TMV-40 was built to be mobile, run at a low decibel level and provide 15,000 cfm through an 18" x 25' duct at 5" static pressure.



AIRCRAFT BRAKE COOLING FAN

Super Vac's Brake Cooling Fan is a specialized unit designed to pull air over the brakes of commercial airliners. The special seal contacts the wheel of the plane, while the powerful fan pulls cooling air past the brake assembly.

Model	Weight	Motor/Engine
724BCS	108 lbs 49 kg	1 HP TEAO Motor
724BCV	105 lbs 48 kg	1 HP Variable Speed Motor
724BCE	110 lbs 50 kg	1 HP Hazardous Location Motor
724BCH	103 lbs 47 kg	4 HP Honda GX Engine
724BCB-	101 lbs 46 kg	1 HP Battery Powered

TILT STAND / FRAME

Super Vac's Tilt Stand / Frame is perfect for elevating the fan's air stream to a higher level (positioned in 18-degree increments from blowing straight up or down). The robust design prevents tipping with its wide stance. Super Vac builds the frame for your choice of industrial fan and can be built with additional cord length, giving you a ventilation system that is truly custom for your needs.

Model	Fan Size	Cord Length	Weight
TF-124	12"	10'	38 lbs
TF-164	16"	10'	42 lbs
TS-200	20"	10'	56 lbs
TS-244	24"	10'	64 lbs

Tilt Stand (TS Models)



Tilt Frame (TF Models)



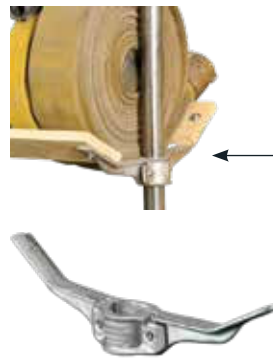
DOOR BAR / HANGER

Dual Hangers allow you to hang a blower/exhauster virtually anywhere — ladders, doors, windows, basements, archways and more. Used in conjunction with the Door Bar, they permit fan placement at any height. The Door Bar deploys easily and features a pull trigger for quick release.

The Extension Bar comes standard. Each can be purchased separately.

Model	Compatible Fans
HANGER	All F, HF, VF and AF series i-Line Fans

Model	Weight	Usable Range
DOOR BAR	13 lbs - 6 kg	26" - 60" with extensions



VINYL COVER

Protect your Super Vac with a vinyl fan cover. Available in red or yellow for all fans up to 30".

Please specify model number when ordering.

Model	Compatible Fans
VINYL COVER	All F, HF, VF and AF series i-Line Fans

LIGHT KITS 12-Watt Spot/Combo LED



This LED light kit adds a 12-watt spot/combo LED to any electric- or Honda GX200-powered PPV. These LEDs are mounted to the fold-down handle and add 1/2" (13 mm) height to the stowed dimensions.

Model	Compatible Fans
LIGHT KIT E PPV	Electric PPVs
LIGHT KIT H PPV	Honda PPVs

WB BRACKET

Use Super Vac's WB Brackets with pipe and 2x6s to create custom storage racks.

Model	Compatible Pipes
WB Small	For 1.5" (38 mm) Pipe
WB Large	For 2" (50 mm) Pipe

Brackets can be spaced 5' apart

THE ULTIMATE CONFINED SPACE COMBO

NANO CONFINED SPACE FANS

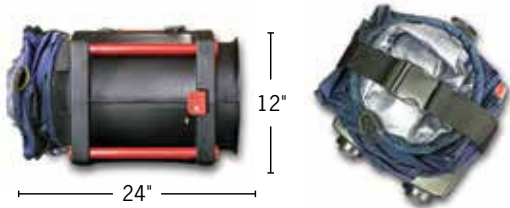
The Nano is a cost effective solution to confined space ventilation challenges. With an 8" diameter, this rugged fan can ventilate by positive or negative pressure methods, while delivering the highest airflow in its class. Also available with a hazardous location motor.



Model	Weight	Motor	Output	Nano Pacs
P8Si	20 lbs 9 kg	1/3 HP, TEAO (Totally Enclosed Air Over), 60Hz, 115V AC	1,054 cfm 1,790 cmh	Available as kit with 15' or 25' standard duct
P8XE	22 lbs 10 kg	1/3 HP, hazardous location rated for Class 1 Group D, 60Hz, 115V AC	1,054 cfm 1,790 cmh	Available as kit with 15' or 25' conductive duct

* Available in 50Hz, 220V by adding "-220" to model number; available in 12V DC by adding "-12V" to model number

THE LFR-BF CONFINED SPACE DUCT



Utilizes a quick-release buckle/strap to secure the duct when folded



Model	Diameter	Length
LFR-BF08-3x8	8" 205 mm	3' + 8' 0.91 m + 2.44 m

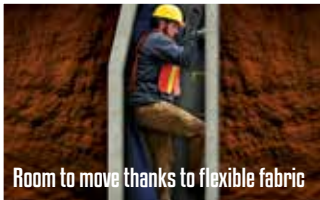
Silver Bullet FR material, made from meta-aramid, ballistic para-aramid and 2% anti-static fiber. Arc resistant and UL certified to NFPA. (Fabric is not conductive or static dissipating.)

PATENT PENDING

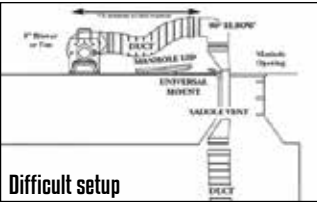
Requires less than 2 cu. ft. of storage space

Featuring an all-new inherently arc and flame resistant ballistic fabric, Super Vac's Nano Series L-shaped duct delivers one of the safest, most compact hoses. The duct folds down to less than half a cubic foot, weighs just 3 lbs. and allows crews to store both the Nano and duct in a compartment without disconnecting.

HOW THE LFR DUCT STACKS UP VS OTHER DESIGNS



The LFR's unique material allows the vent to contour around the worker while moving through the confined space. The saddle vent helix duct is less forgiving.



The LFR connects directly to the fan using a built-in strap. Meanwhile, the saddle duct requires setup of multiple components. The manhole lid must be used during setup to keep these components from falling into the space.



The saddle duct components take up more storage space than the LFR duct.

Flexible fabric

Pinched design

700 cfm VS 350 cfm

The Super Vac Nano produces an airflow of 1,037 cu. ft. per minute. Together, the Nano and the LFR duct have a 700 cfm output, two times the airflow of the saddle duct's pinched design, which greatly hinders airflow.

OTHER DUCT OPTIONS

SPIRAL DUCTS

Looking for a traditional spiral duct? You won't find a more durable, long-lasting spiral duct than one from Super Vac's lineup. These ducts are ideal for moving large quantities of air into hard-to-reach places using positive or negative pressure and come with a built-in storage bag for easy transportation. Hot-melt wear strips cover the helix for added durability up to 250° degrees.

Available in the following:

Standard Duct



Model	Pairs With	Diameter	Length
8x15BC1	8" Nano	8" (203 mm)	15' (4.6 m)
8x25BC1	8" Nano	8" (203 mm)	25' (7.6 m)
12x20AD	12" Blowers/Exhausters	12" (305 mm)	20' (6.1 m)
12x20BC1	12" PPVs	12" (305 mm)	20' (6.1 m)
16x20AD	16" Blowers/Exhausters	16" (406 mm)	20' (6.1 m)
16x20BC1	16" PPVs	16" (406 mm)	20' (6.1 m)
20x20AD	20" Blowers/Exhausters	20" (508 mm)	20' (6.1 m)
20x20BC1	18" and 20" PPVs	20" (508 mm)	20' (6.1 m)
24x20AD	24" Blowers/Exhausters	24" (610 mm)	20' (6.1 m)
24x24BC1	24" PPVs	24" (610 mm)	20' (6.1 m)
24x20BC1	24" PPVs	24" (610 mm)	20' (6.1 m)

For Duct-Only Belt Cuff (no adapter), models end with BC1

For Duct with Adapter, models end with AD



Hazardous Location Duct with conductive material

Model	Pairs With	Diameter	Length
8x15HZ1	8" Nano	8" (203 mm)	15' (4.6 m)
8x25HZ1	8" Nano	8" (203 mm)	25' (7.6 m)
12x20HZAD	12" Blowers/Exhausters	12" (305 mm)	20' (6.1 m)
12x20HZ1	12" PPVs	12" (305 mm)	20' (6.1 m)
16x20HZAD	16" Blowers/Exhausters	16" (406 mm)	20' (6.1 m)
16x20HZ1	16" PPVs	16" (406 mm)	20' (6.1 m)
20x20HZAD	20" Blowers/Exhausters	20" (508 mm)	20' (6.1 m)
20x20HZ1	18" and 20" PPVs	20" (508 mm)	20' (6.1 m)
24x20HZAD	24" Blowers/Exhausters	24" (610 mm)	20' (6.1 m)
24x20HZ1	24" PPVs	24" (610 mm)	20' (6.1 m)

For Duct-Only Belt Cuff (no adapter), models end with HZ1

For Duct with Adapter, models end with HZAD

L DUCT FOR CONFINED SPACE

Another option for ventilating manholes and other tight areas, this L Duct features translucent material and can be special ordered to any horizontal length (up to 25') or vertical length (up to 20').



* With adapter

Standard L Duct (for Nano and F Series)

Model	Pairs With	Diameter	Length
LD8-3x8	Nano	8" (203 mm)	3'+8" (0.91 m+2.44 m)
LD12-3x8*	12" F Series	12" (305 mm)	3'+8" (0.91 m+2.44 m)
LD16-3x8*	16" F Series	16" (406 mm)	3'+8" (0.91 m+2.44 m)



MANHOLE ADAPTER

These adapters allow utility companies to safely place negative pressure fans on top of the manhole to pull smoke and toxic fumes deep below the surface. These rugged aluminum adapters come in four sizes and sit in manhole rings to provide stable mounting for blowers/exhausters.

Note: Not for use if the manhole is the only means of egress.

Model	Fan Size	Manhole Size
MA12-24	12" 305 mm	24" 508 mm
MA12-30	12" 305 mm	30" 762 mm
MA16-24	16" 406 mm	24" 508 mm
MA24-30	16" 406 mm	30" 762 mm



DUCT ADAPTER

The duct adapter attaches any kind of spiral duct with a belted cuff to a smoke ejector. It simply fits over the edge of the fan and secures with two clasps. Available for 12"-24" blowers/exhausters.



supervac.com

3842 Redman Dr. - Ft Collins, CO 80524

800.525.5224

See a Super Vac representative or authorized dealer for further details. All information in this brochure is the latest available at the time of publication. Printed in the USA. 1K 1123 ©2023 Super Vac