

L DUCT Smoke Ejector Accessories

You won't find a more durable, long-lasting duct than Super Vac's Smoke Ejector L Duct, perfect for ventilating manholes and other tight areas. All ducts come with a built-in storage bag for easy transportation, and hot-melt wear strips cover the helix for added durability. The L Duct should only be used the discharge side of the fan.

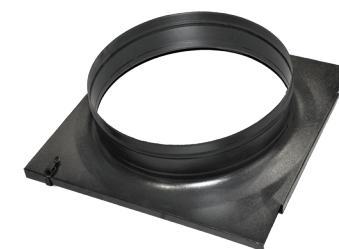
Features

- 1 Heavy-Duty Materials:** Made from translucent T9 FR
- 2 L-Shaped Design:** Allows for ventilation of manholes and other tight areas; duct length can be customized up to 25' in horizontal length and up to 20' in vertical length
- 3 Heavy-Duty Hot Melt Wearstrips:** Covers the wire helix for added durability
- 4 Heat-Resistant Properties:** Flame resistant

L Duct with adapter

Perfect for ventilating manholes and other tight areas, the L Duct should only be used on the discharge side of the fan.

Model	Diameter	Length
LD12-3x8	12" - 305mm	3'+8' - 0.91m+2.44m
LD16-3x8	16" - 406mm	3'+8' - 0.91m+2.44m



Duct Adapter

The duct adapter helps you attach any kind of spiral duct with a belted cuff to a smoke ejector. It simply fits over the edge of the fan and secures with two clasps. Available for 12"-24" smoke ejectors.

L DUCT

A Super Vac L Duct shall be supplied. Design shall include heavy-duty vinyl wearstrips with self-adhering neoprene backing, approximately 25-27 ounce square yard. The duct shall weigh no more than 1 pound per foot of duct and have a bend radius of 6.1". A Class 1 hard-drawn, spring-steel wire helix that conforms to ASTM 227 specifications shall be in place to support the duct.

The material shall be a translucent T9 FR fabric, produced with polyester scrim for high tear resistance and meet Federal Standard 191-5903 for flame resistance. The duct shall have produced to UL94-V-0 flame retardancy specifications / MINS 540-106-1 (Mare Island Naval Shipyard) / California T-19 / NFPA 701 - Large Scale. Abrasion resistance of 18,000 cycles from H-22 wheel with 1,000 gram load (FSTM 191 Method 5306).

