

## HAZARDOUS LOCATION DUCT PPV and Smoke Ejector Accessories

The Super Vac Hazardous Location Duct conducts static charges, making it possible to move large quantities of air into hard-to-reach places using positive or negative pressure. This duct will fit any Super Vac, PPV or Smoke Ejector with an adapter, or it can be connected to another duct with belted cuff to extend ducting. All ducts come with a built-in storage bag for easy transportation as well as a grounding wire to complete the path of dissipation.

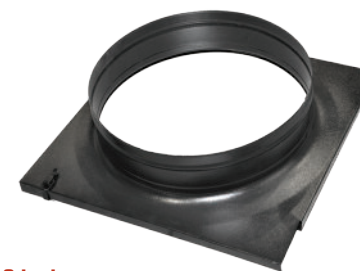
### Features

- 1 **Conductive Material:** Made from single ply neoprene coated polyester material and produced with a specially formulated conductive compound to dissipate static build-up when the duct is properly grounded.
- 2 **Continuous Class 1 Spring Steel Wire Helix:** Allows for compact storage and flexibility on scene
- 3 **Heavy-Duty Hot Melt Wearstrips:** Covers the wire helix for added durability
- 4 **Material Conductivity:** Rated to 100,000 ohms or less per square inch
- 5 **Ground Wire:** Completes path of dissipation to ventilator

### Hazardous Location Duct

Model	Pairs With	Diameter	Length
8x15HZ1	8" Nano	8" (203 mm)	15' (4.6 m)
8x25HZ1	8" Nano	8" (203 mm)	25' (7.6 m)
12x20HZAD	12" F Series/Smoke Ejectors	12" (305 mm)	20' (6.1 m)
12x20HZ1	12" PPVs	12" (305 mm)	20' (6.1 m)
16x20HZAD	16" F Series/Smoke Ejectors	16" (406 mm)	20' (6.1 m)
16x20HZ1	16" PPVs	16" (406 mm)	20' (6.1 m)
20x20HZAD	20" F Series/Smoke Ejectors	20" (508 mm)	20' (6.1 m)
20x20HZ1	18" and 20" PPVs	20" (508 mm)	20' (6.1 m)
24x20HZAD	24" F Series/Smoke Ejectors	24" (610 mm)	20' (6.1 m)
24x20HZ1	24" PPVs	24" (610 mm)	20' (6.1 m)

For belted cuff connection (no adapter), models end with HZ1. For Duct with Adapter, models end with AD.



Duct Adapter

The duct adapter helps you attach any kind of spiral duct with a belted cuff to a smoke ejector. It simply fits over the edge of the fan and secures with two clasps. Available for 12"-24" smoke ejectors.





## HAZARDOUS LOCATION DUCT

A Super Vac, conductive duct shall be supplied. The duct shall be constructed from a single ply of conductive neoprene coated polyester material and is supported by a continuous spring steel wire helix.

The conductive duct is produced with a specially formulated conductive compound, which provides a superb way to dissipate static build-up when the duct is properly grounded. Conductive material shall be rated to 100,000 ohms or less per square inch.

The product should be grounded, with a solid means of connection. Grounding this product will provide a safe, positive means of discharging static build-up. Grounding wire shall be provided at the wire terminations ends.

The duct shall come with a built-in carry bag that duct collapses into for easy transportation. The carry bag shall also be constructed of conductive material.

Design shall include heavy-duty vinyl wearstrips with self-adhering neoprene backing, approximately 25-27 ounce square yard. A Class 1 hard-drawn, spring-steel wire helix that conforms to ASTM 227 specifications shall be in place to support the duct.

The duct shall have produced to UL97-V-O flame retardant specifications / MINS 540-106-1 (Mare Island Naval Shipyard) / California T-19 / NFPA 701 - Large Scale. Abrasion resistance of 18,000 cycles from H-22 wheel with 1000 gram load (FSTM 191 Method 5306).

