

MODEL: PH820S

P/N 071-14436 AXIAL BLOWER

Operating & Maintenance Instructions

P/N 11595-001 Rev. 2

Contents

General	2
Safety Precautions	2
Maintenance & Repair	2
Product Description	3
Start-up & Operation	3
Parts List	4
Exploded View Drawing	5



SUPER VAC
THE VENTILATION SPECIALISTS
www.supervac.com
1-800-525-5224
Fax 970-667-4296

**SUPER VAC PH820S AXIAL BLOWER
(P/N 071-14436)**

1.0 GENERAL

1.01 This manual covers the description, operation and maintenance of the Super Vac Model PH820S Axial Blower (P/N 071-14436).

PLEASE TAKE THE TIME TO READ THIS MANUAL BEFORE OPERATING BLOWER.

1.02 The PH820S portable blower, is specifically designed to provide a completely portable source of fresh air. This blower is powered by a 120V AC, 60 HZ electrical source.

2.0 SAFETY PRECAUTIONS

FOR YOUR SAFETY READ THE FOLLOWING SAFETY PRECAUTIONS.

2.01 Do not use the blower for other than its intended use.

2.02 Do not wear loose clothing that can become entangled in operating machinery. Do not operate blower without inlet or outlet screen guards in place. (if guards are missing or damaged, contact factory for replacements).

2.03 Do not place fingers or any other object through inlet or outlet screens.

2.04 GROUND FAULT CIRCUIT INTERRUPTER. Always operate a blower from a 120V AC source supplied through a ground fault circuit interrupter receptacle, test receptacle for ground fault before plugging in the blower.

2.05 WET HANDS. Never handle energized power cords with wet hands.

2.06 WATER. Never let extension cords or plug connection lay in water. Locate the blower so that it cannot fall into water inadvertently.

2.07 EQUIPMENT. Never use cords with frayed, cut, or brittle insulation. Check the cord for sound connections to the ground fault interrupter plug.

2.08 EXPLOSIVE ATMOSPHERE. Never use this blower in any explosive environment.

2.09 SAVE THESE INSTRUCTIONS.

3.0 MAINTENANCE AND REPAIR

3.01 Be sure the blower is disconnected from the power source before doing any maintenance or repair work on the blower.

3.02 Check all power cords for cuts, frayed ends, or brittle insulation. See the enclosed parts list for the replacement cord part number.

3.03 For parts or service information, contact:

**Super Vacuum Mfg. Co.
Service Department
1303 East 11th st.
Loveland, CO 80537
Phone 970-667-5146 or
Toll Free 1-800-525-5224
Fax (970) 667-4296**

4.0 PRODUCT DESCRIPTION:

The Super Vac Model PH820S Axial Blower (P/N 071-14436)

The Model PH820S Blower is a single-speed, fresh-air blower for use in moderate conditions.

4.01 DIMENSIONS & WEIGHTS

Width: 13" (330 mm)
Length: 14.5" (368 mm)
Height: 14.5" (368 mm)
Weight: 19.5 lbs (8.89 kg)

4.02 MODEL SPECIFICATIONS & PERFORMANCE:

Voltage: 120V AC, 60 HZ
Amperage: 4
H.P.: 1/3 (.248kw)
Free Air: 1373 cfm (38.89 m3/min.)
One 90° Bend: 740 cfm (20.96 m3/min.)
Two 90° Bends: 638 cfm (18.07 m3/min.)

Air flow certified by CEESI per ATT E.L. 2723 and P.L. 2709.

5.0 START UP & OPERATING PROCEDURES

READ ENTIRE START UP & OPERATING PROCEDURE BEFORE OPERATING BLOWER.

5.01 PRE-START PROCEDURE

CAUTION: Read, 2.0 SAFETY PRECAUTIONS.

- A. Check blower inlet and outlet guard screens for obstructions. Check immediate area around blower for objects that could be sucked into the blower inlet and remove from area.
- B. Extend and place blower hose as required. BE SURE NO TOXIC FUMES ARE BLOWN INTO A CONFINED SPACE.

5.02 START PROCEDURE

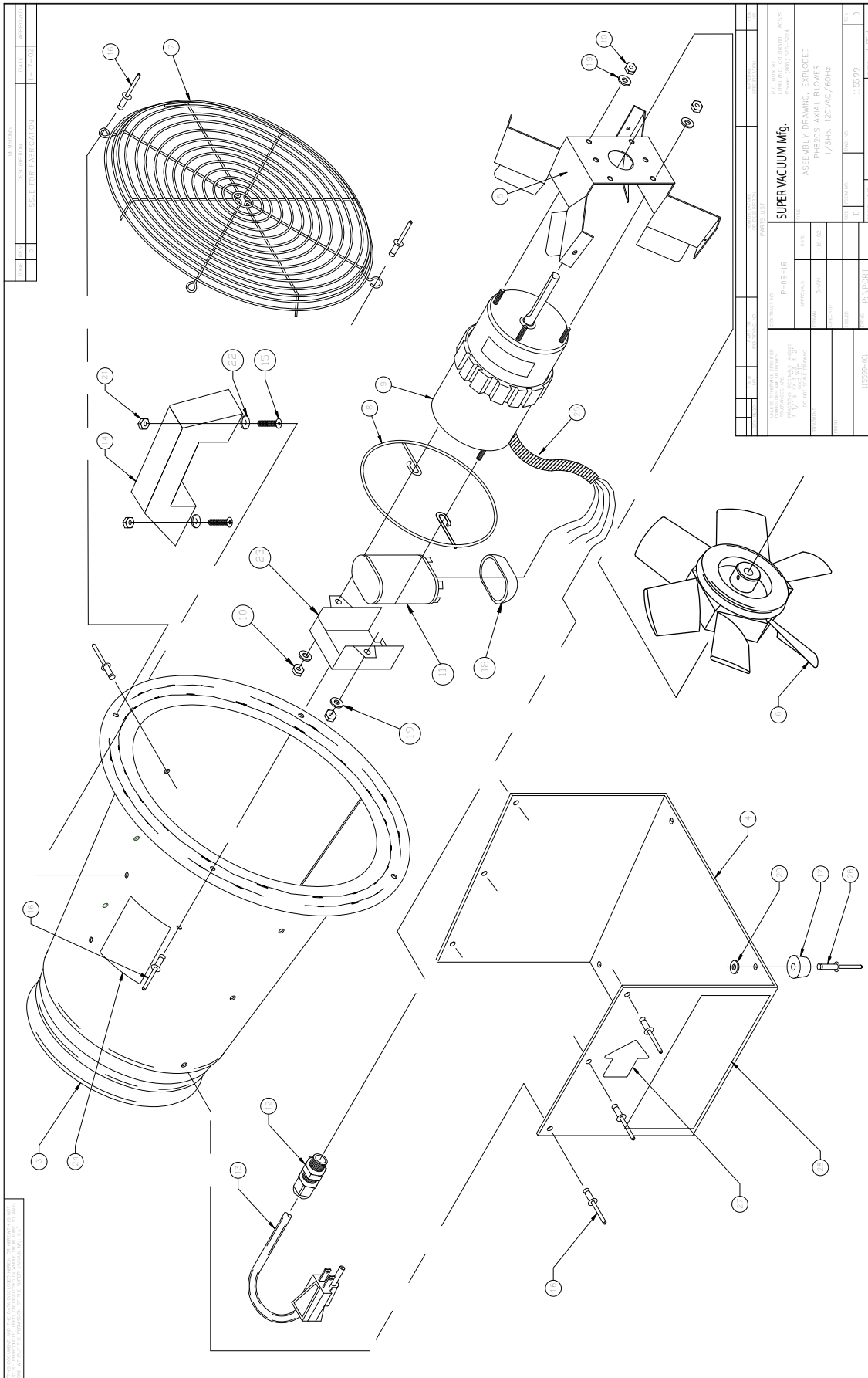
- A. Plug in blower power cord to a GFI protected 120V AC outlet.
- B. Do not leave blower plugged in or operating while unattended.

5.03 SHUT-OFF PROCEDURE

When blower operation is no longer required unplug the power cord. Coil and store the power cord in the opening between the base and the blower housing.

Parts List

ITEM #	PART #	DESCRIPTION	QTY.
3	110006-001	Housing Weldment - Housing w/inlet spinning	1
4	114014-001	Base - Axial Blower	1
5	118809-001	Motor Mount, Zinc plated	1
6	110001-001	Fan Blade - composite, 10.00" Dia. x .375" Dia. Shaft	1
7	104977-001	Grille - Intake, Blower, Circular Wire with 1" offset	1
8	110000-001	Guard, Blower Outlet, Wire Ring	1
9	110002-001	Motor - Electric, 120 VAC, 1/3 HP, Axial, .375" Dia. Shaft	1
10	110733-007	Locknut - 10-32 UNC, Nylon Insert	6
11	110007-001	Capacitor - 7.5 MFD, 370 VAC, 60 Hz	1
12	100405-004	Strain Relief - Wt., 25-.38 Dia. Cable, 1/2" Hub	1
13	26E-005700	Cord & Plug Set - 3 wire, 16/3, SO, 12" long, 90°C rated	1
14	106942-001	Handle - Black Plastic	1
15	115166-001	Screw - Truss Head #10-24 x 5/8" Long, Black	2
16	188518-001	Rivet-Stavex .188" dia. x .060" - .375" Grip, Black	14
17	100188-001	Foot - Rubber, 3/4" OD, w/washer	4
18	110288-001	Cover - rubber, capacitor connection	1
19	100050-006	Washer - Flat #10, Type A, W Plated	6
20	104151-001	Washer - Rivet Backup, 7/32"ID x 7.16" OD, stainless steel	4
21	112178-001	Locknut #10-24 Black	2
22	1000050-023	Washer - Flat #10, SAE	2
23	114628-001	Bracket, Capacitor	1
24	115596-001	Decal, I.D. & Serial No.	1
25	101550-000	Loom - Split, Convolutd, 1/2" Dia.	1 ft.
26	111517-001	Rivet - Blind (pop), black, flange dome, .188" dia. x .251" - .375" grip	4
27	11837-001	Arrow Decal, Black	2
28	115673-001	Decal, Heatpac 25	2





SUPER VAC
THE VENTILATION SPECIALISTS
www.supervac.com
1-800-525-5224
Fax 970-667-4296