

HAZARDOUS LOCATION DUCT Smoke Ejector Accessories

The Super Vac Hazardous Location Duct conducts static charges away from airflow, making it possible to move large quantities of air into hard-to-reach places using positive pressure. This duct will fit any Super Vac Smoke Ejector, or it can be connected to another duct with belted cuff to extend ducting. All ducts come with a built-in storage bag for easy transportation.

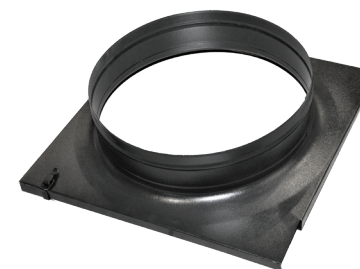
Features

- 1 **Static-Dissipating Material:** Made from single ply neoprene coated polyester material and produced with a specially formulated conductive compound to dissipate static build-up when the duct is properly grounded.
- 2 **Continuous Class 1 Spring Steel Wire Helix:** Allows for compact storage and flexibility on scene.
- 3 **Heavy-Duty Hot Melt Wearstrips:** Covers the wire helix for added durability
- 4 **Thermal Conductivity:** Rated up to 100,000 ohms or less per square inch

Standard Duct with adapter

| Model | Pairs With | Diameter | Length |
|-----------|-----------------------------|--------------|---------------|
| 8x15HZ1 | 8" Nano | 8" – 203 mm | 15 ft – 4.6 m |
| 8x25HZ1 | 8" Nano | 8" – 203 mm | 25 ft – 7.6 m |
| 12x20HZAD | 12" F Series/Smoke Ejectors | 12" – 305 mm | 20 ft – 6.1 m |
| 12x20HZ1 | 12" PPVs | 12" – 305 mm | 20 ft – 6.1 m |
| 16x20HZAD | 16" F Series/Smoke Ejectors | 16" – 406 mm | 20 ft – 6.1 m |
| 16x20HZ1 | 16" PPVs | 16" – 406 mm | 20 ft – 6.1 m |
| 20x20HZAD | 20" F Series/Smoke Ejectors | 20" – 508 mm | 20 ft – 6.1 m |
| 20x20HZ1 | 18" and 20" PPVs | 20" – 508 mm | 20 ft – 6.1 m |
| 24x20HZAD | 24" F Series/Smoke Ejectors | 24" – 610 mm | 20 ft – 6.1 m |
| 24x20HZ1 | 24" PPVs | 24" – 610 mm | 20 ft – 6.1 m |

For Duct-Only Belt Cuff (no adapter), models end with BC1. For Duct with Adapter, models end with AD



Duct Adapter

The duct adapter helps you attach any kind of spiral duct with a belted cuff to a smoke ejector. It simply fits over the edge of the fan and secures with two clasps. Available for 12"-24" smoke ejectors.



HAZARDOUS LOCATION DUCT

A Super Vac conductive duct shall be supplied. The duct shall be constructed from a single ply of conductive neoprene coated polyester material and is supported by a continuous spring steel wire helix.

The conductive duct is produced with a specially formulated conductive compound, which in turn provides a superb way to dissipate static build-up when the duct is properly grounded. Conductive material shall be rated to 100,000 ohms or less per square inch.

The product should be grounded, with a solid means of connection. Grounding this product will provide a safe, positive means of discharging static build-up. Grounding straps shall be provided at the wire terminations ends.

The duct shall come with built-in carry bag that duct contracts for easy transportation. The carry bag shall also be constructed of conductive material.

Design shall include heavy-duty vinyl wearstrips with self-adhering neoprene backing, approximately 25-27 ounce square yard. A Class 1 hard-drawn, spring-steel wire helix that conforms to ASTM 227 specifications shall be in place to support the duct.

The duct shall have produced to UL94-V-0 flame retardancy specifications / MINS 540-106-1 (Mare Island Naval Shipyard) / California T-19 / NFPA 701 - Large Scale. Abrasion resistance of 18,000 cycles from H-22 wheel with 1000 gram load (FSTM 191 Method 5306).

