

SUPERVAC



Time Tested
↔
Firefighter Proven

supervac.com

TABLE OF CONTENTS

Electric PPV

Valor.....4

7 Series.....5

Gas PPV

Valor.....6

7 Series.....7

Battery PPV/Water Turbine.....8

PPV Accessories.....9

Large Scale PPV

SVU.....10

BFF / 730.....11

Smoke Ejectors

Electric.....12

Gas.....13

Water Turbine.....13

Smoke Ejector Accessories.....14

Saws.....15

Environmental Control.....16-17

SmokeBlockAid.....16

Smoke Machines.....17

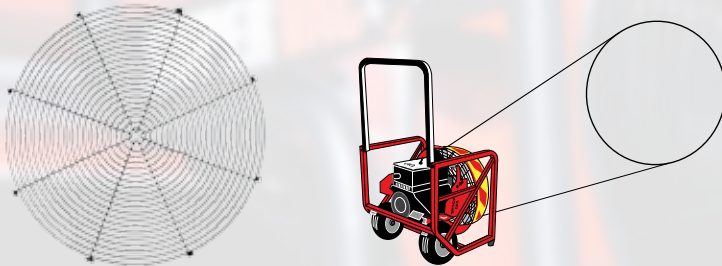
Confined Space.....18-19

SUPER VAC'S GUARD OPTIONS

Air Cone Guard

Air Cone Guards create an air stream with a wider pattern creating pressure to be displaced evenly across the venturi of the fan. This pattern is extremely useful for many different ventilation scenarios including open floor plans and large commercial structures. This is also a great solution when there is less room in front of doors, such as small front porches and stoops.

Standard on all 7 Series PPVs + Smoke ejectors



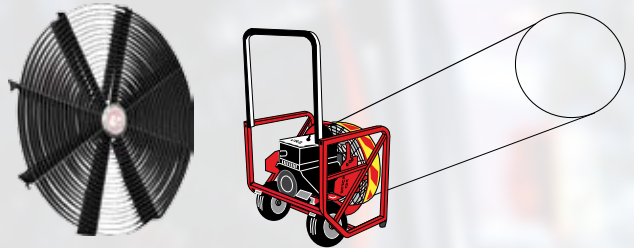
Advantages of Air Cone Guard

- Closer setup
Set back distance approximately 6'
- Small front porches
- Stoops
- Urban residential areas with numerous steps to entrance that limits space at entrance
- Narrow walkways in hotels, apartment complexes, etc
- Hallways in hospitals, office buildings, etc
- Rear entrances with decks
- Better in high flow situations
- Slightly less expensive & less weight
- Great for use in V-Attack
- Super Vac quality & 5 year warranty

StreamShaper Guard

The new StreamShaper Guard has an air stream that is narrower, causing more pressure in front of the shroud of the fan. This is a great pattern for scenarios where departments need a more precise airflow, such as high rise buildings and floor plans with many small rooms. This pattern can be set up further from the entrance to the building leaving more room for personnel entering the building.

Standard on all Valor Series PPVs



Advantages of StreamShaper Guard

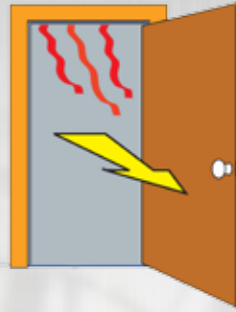
- Further setup
Set back distance up to 15'
- More room at entrance door
- Fewer steps at entrance door
- Less noise inside structure from fan
- More room for operations at entrance
- Better in high pressure situations
- Multiple small rooms
- High rise buildings
- Homes with older/traditional floor plans
- Slightly higher air flow
- Great for use in V-Attack
- Super Vac quality & 5 year warranty



FAN PLACEMENT INSTRUCTIONS



Set back for Air cone guards is 4 to 6 ft. For a fan with the StreamShaper guard, set back can be between 6 and 15 ft.



Fans are not located directly in the doorway for positive pressure operations in order to keep the ingress / egress route clear. Firefighters entering the building should also be aware not to stand in the doorway, blocking the incoming air. The Smoke BlockAid (pg 10) can also be hung in the doorway to prevent bidirectional flow.



The design of the V-Attack is such that the door is sealed top to bottom with the units at 45° angles. This leaves a straight shot for attack lines.

When using a garage door, open it part way and seal the doorway with the cones of air from two fans.



Do not block the air supply by standing in back of fan.

Extension Cords

Extension cords work in much the same way as fire hoses. More pressure is required for 100 gpm at the end of a 400 foot 1-1/2" hose than for 100 gpm at the end of a 50 foot 1 1/2" hose. The longer the extension cord, the less voltage there is at the workable end. This problem can be overcome by using extension cords with heavier wires which conduct more electricity and result in a lower voltage drop. The voltage drop caused by undersized extension cords usually cuts the performance of the smoke ejector to below the motor name plate specifications.

SUPER VAC HP	QTY	STARTING WATTAGE REQUIRED	MAXIMUM CABLE EXTENSION LENGTHS					
			Meters Feet	25	50	75	100	350
1/3"	1	2000	14 GA					
	1	2000	10 GA					
1/2"	1	2000	14 GA					
	1	2000	10 GA					
2	4000	12 GA						
	4000	10 GA						
3	6000	8 GA						
	6000	6 GA						
1*	4000	12 GA						
	4000	10 GA						
2	8000	8 GA						
	8000	6 GA						
1 1/2	6000	10 GA						
	12000	8 GA						
			6 GA					
			8 GA					
			4 GA					

* For 220V fans, double the max length cable extensions shown above

WARNING: Never exceed cable extension lengths. Always use required wire gauge. Never use reeled or coiled cable. Power supply must handle wattage requirements.

Cord Reels

Care must be taken when using cord reels to power any portable electric equipment. If the cord is not completely unrolled the unrolled part of the cord produces a counter EMF (electromotive force). The counter EMF in effect reduces the current carrying ability of the cord. If the cord size and length are near the limits recommended above, either pull the entire length of cord off the reel when using portable equipment or replace the cord with a larger cord.



Older methods of using fans are not as effective as parallel methods, such as the V- Attack.

Electric PPVs

VALOR

The Valor Series is the latest in PPV innovations from Super Vac. Featuring a Patent Pending frame design that is simple and intuitive to position on the fireground, the Valor series is engineered to ease the toughest ventilation challenges.

Valor PPVs feature a tough, tubular aluminum frame (15% lighter than previous models), full width handle, real rubber never-flat tires, 5-position tilt via the quick step pad, and the ability to easily attach ducting to the output. The Valor was also designed to be more versatile. With the addition of the 5-position Step Pad, this PPV can easily be placed on stairs eliminating problems previously encountered on 1 and 2 step entry ways and front porches. The Valor also keeps firefighter safety in mind. Not only are the heavy duty tires tough enough to maneuver curbs and debris, found on scene, they are also strategically placed on the back of the frame so you never need to put yourself between the PPV and the fire during set-up.

Features

- ↻ AMCA, Air Movement and Control Association licensed airflow - Ratings listed below are based on tests in accordance with AMCA publication 211 and comply with the AMCA certified ratings program
- ↻ 7-Point Cast Aluminum Blade – holds up better than plastic in high heat
- ↻ Precision Spun Steel Shroud – durability with maximum airflow
- ↻ Full Roll Cage Aluminum Frame – protects key components – 15% lighter than steel frames
- ↻ Flat Proof Tires – heavy duty rubber, never flat, rolls up stairs and curbs
- ↻ 5-Position Tilt Frame – positive and negative angles allow for placement on stairs, easy to maneuver for taller firefighters
- ↻ StreamShaper Guard – standard guard designed for larger setback, air cone guard available by request
- ↻ Fold Down Ergonomic Handle – folds down within frame for storage, easy grip with heavy duty gloves
- ↻ 5 Year Warranty



18" Blades - H x W x D: 23" x 22" x 22" - 585mm x 560mm x 560mm

Model	Weight	Motor	RPM	Start	Run	Set Back	Angle	Output
V18-ES	80 lbs 36.5 kg	Leeson, single speed, TEAO, 1Hp, 60/50hz, 115/230V	1750	4000 w 15 amp circuit	1500 w	9ft 2.7 m	13°	6378 cfm 10,836 cmh
V18-EX	90 lbs 41 kg	Bluffton, single speed – hazardous location rated for Group 1 Class D, 1Hp, 60/50hz, 115/230V AC	1750	4000 w 15 amp circuit	1500 w	9 ft 2.7 m	13°	6378 cfm 10,836 cmh
V18-EV	84 lbs 38 kg	Bluffton, Variable speed 1.5HP 60/50HZ 115/230V AC	2400	2000 w 15 amp circuit	1500 w	9 ft 2.7 m	14°	10,744 cfm 18,254 cmh

20" Blades - H x W x D: 26" x 25" x 23" - 660mm x 640mm x 590mm

Model	Weight	Motor	RPM	Start	Run	Set Back	Angle	Output
V20-ES	82 lbs 37 kg	Leeson, single speed, TEAO, 1Hp, 60/50hz, 115/230V	1750	4000 w 15 amp circuit	1500 w	9ft 2.7 m	10°	9007 cfm 15,302 cmh
V20-EX	92 lbs 42 kg	Bluffton, single speed – hazardous location rated for Group 1 Class D, 1Hp, 60/50hz, 115/230V AC	1750	4000 w 15 amp circuit	1500 w	9 ft 2.7 m	10°	9007 cfm 15,302 cmh
V20-EV	86 lbs 39 kg	Bluffton, variable speed 1.5HP 60/50 HZ 115/230V AC	2400	2000 w 15 amp circuit	1500 w	9 ft 2.7m	11°	13,788 cfm 23,426 cmh

*RPM is at 60Hz – for 50Hz – RPM and output should be multiplied by 5/6

7 SERIES

Classic true full roll cage design that has proven itself over the years
 – durable steel frame, 4-position tilt lever

Features

- ◊ 7-Point Cast Aluminum Blade – holds up better than plastic in high heat
- ◊ Precision Spun Steel Shroud - durability with maximum airflow
- ◊ Full Roll Cage Steel Frame – protects key components
- ◊ Flat Proof Tires – heavy duty rubber, never flat, rolls up stairs and curbs
- ◊ 4-Position Tilt Frame – -10°, 0°, 10°, 20°
- ◊ Air Cone Guard – classic design for maximum airflow, StreamShaper guard optional
- ◊ Fold Down Handle – folds down within frame for storage, easy grip with heavy duty gloves
- ◊ 5 Year Warranty



16" Blades - H x W x D: 20" x 20.5" x 16" - 508mm x 521mm x 406mm

Model	Weight	Motor	RPM	Start	Run	Set Back	Angle	Output
716-E2	68 lbs 31 kg	Leeson, single speed, TEAO, 1Hp, 60/50hz, 115/230V	1750	4000 w 15 amp circuit	1500 w	6 ft 1.8 m	18°	6740 cfm 11,450 cmh
716-EXP	78 lbs 35.5 kg	Bluffton, single speed – hazardous location rated for Group 1 Class D, 1Hp, 60/50hz, 115/230V AC	1750	4000 w 15 amp circuit	1500 w	6 ft 1.8 m	18°	6740 cfm 11,450 cmh
716-EVS	72 lbs 33 kg	Bluffton, variable speed, 1.5 Hp, 60/50hz, 115/230V AC	2500	2000 w 15 amp circuit	1500 w	6 ft 1.8 m	18°	9950 cfm 16,900 cmh

18" Blades - H x W x D: 22" x 23.5" x 19.5" - 559mm x 597mm x 495mm

Model	Weight	Motor	RPM	Start	Run	Set Back	Angle	Output
718-E2	82 lbs 37 kg	Leeson, single speed, TEAO, 1Hp, 60/50hz, 115/230V	1750	4000 w 15 amp circuit	1500 w	6 ft 1.8 m	18°	8140 cfm 13,830 cmh
718-EXP	92 lbs 42 kg	Bluffton, single speed – hazardous location rated for Group 1 Class D, 1Hp, 60/50hz, 115/230V AC	1750	4000 w 15 amp circuit	1500 w	6 ft 1.8 m	18°	8140 cfm 13,830 cmh
718-EVS	86 lbs 39 kg	Bluffton, variable speed, 1.5 Hp, 60/50hz, 115/230V AC	2400	2000 w 15 amp circuit	1500 w	6 ft 1.8 m	18°	12,820 cfm 21,780 cmh
Model	Weight	Motor	Run Time					Output
718-b	68 lbs 31 kg	Leeson, variable speed, 1 Hp, 24V Lithium Ion Battery Battery adds 31 lbs (14 kg)	30 min - 120 min - 1000 cycles can be plugged into 115V AC			6 ft 1.8 m	18°	11,140 cfm 18,925 cmh

20" Blades - H x W x D: 25.5" x 26" x 19.5" - 648mm x 660mm x 495mm

Model	Weight	Motor	RPM	Start	Run	Set Back	Angle	Output
720-E2	88 lbs 40 kg	Leeson, single speed, TEAO, 1Hp, 60/50hz, 115/230V	1750	4000 w 15 amp circuit	1500 w	6 ft 1.8 m	18°	10,190 cfm 17,310 cmh
720-EXP	98 lbs 45 kg	Bluffton, single speed – hazardous location rated for Group 1 Class D, 1Hp, 60/50hz, 115/230V AC	1750	4000 w 15 amp circuit	1500 w	6 ft 1.8 m	18°	10,190 cfm 17,310 cmh
720-EVS	92 lbs 42 kg	Bluffton, variable speed, 1.5 Hp, 60/50hz, 115/230V AC	2400	2000 w 15 amp circuit	1500 w	6 ft 1.8 m	18°	15,110 cfm 25,670 cmh

24" Blades - H x W x D: 28" x 29.5" x 21" - 711mm x 749mm x 533mm

Model	Weight	Motor	RPM	Start	Run	Set Back	Angle	Output
724-E2	104 lbs 47.5 kg	Leeson, single speed, TEAO, 1Hp, 60/50hz, 115/230V	1750	4000 w 15 amp circuit	1500 w	6 ft 1.8 m	18°	13,320 cfm 22,630 cmh
724-EXP	114 lbs 52 kg	Bluffton, single speed – hazardous location rated for Group 1 Class D, 1Hp, 60/50hz, 115/230V AC	1750	4000 w 15 amp circuit	1500 w	6 ft 1.8 m	18°	13,320 cfm 22,630 cmh
724-EVS	108 lbs 49 kg	Bluffton, variable speed, 1.5 Hp, 60/50hz, 115/230V AC	2400	2000 w 15 amp circuit	1500 w	6 ft 1.8 m	18°	16,370 cfm 27,815 cmh

*RPM is at 60Hz – for 50Hz – RPM and output should be multiplied by 5/6

Gas PPVs

VALOR

The Valor Series is the latest in PPV innovations from Super Vac. Featuring a Patent Pending frame design that is simple and intuitive to position on the fireground, the Valor series is engineered to ease the toughest ventilation challenges.

Valor PPVs feature a tough, tubular aluminum frame (15% lighter than previous models), full width handle, real rubber never-flat tires, 5-position tilt via the quick step pad, and the ability to easily attach ducting to the output. The Valor was also designed to be more versatile. With the addition of the 5-position Step Pad, this PPV easily can be placed on stairs eliminating problems previously encountered on 1 and 2 step entry ways and front porches. The Valor also keeps firefighter safety in mind. Not only are the heavy duty tires tough enough to maneuver curbs and debris, found on scene, they are also strategically placed on the back of the frame so you never need to put yourself between the PPV and the fire during set-up.



18" Blades - H x W x D: 23" x 22" x 22" - 585mm x 560mm x 560mm

Model	Weight	Engine	Displacement	RPM	Set Back	Angle	Output
V18-GX	84 lbs 38 kg	Honda GX200	196 cc	3535	6 ft 1.8 m	14°	15,168 cfm 25,770 cmh
V18-GC	76 lbs 35 kg	Honda GC160	160 cc	3360	6 ft 1.8 m	11°	13,223 cfm 22,466 cmh

20" Blades - H x W x D: 26" x 25" x 23" - 660mm x 640mm x 590mm

Model	Weight	Engine	Displacement	RPM	Set Back	Angle	Output
V20-GX	86 lbs 39 kg	Honda GX200	196 cc	3350	6 ft 1.8 m	12°	18,182 cfm 30,891 cmh
V20-GC	78 lbs 35 kg	Honda GC160	160 cc	3185	6 ft 1.8 m	13°	15,499 cfm 26,248 cmh

Features

- ◊ AMCA, Air Movement and Control Association Licensed airflow, Ratings listed below are based on tests and procedure in accordance with AMCA publication 211 and comply with the AMCA certified ratings program
- ◊ Precision Spun Steel Shroud – durability with maximum airflow
- ◊ 7-Point Cast Aluminum Blade – holds up better than plastic in high heat
- ◊ Full Roll Cage Aluminum Frame – protects key components – 15% lighter than steel frames
- ◊ Flat Proof Tires – heavy duty rubber, never flat, rolls up stairs and curbs
- ◊ 5-Position Tilt Frame – positive and negative angles allow for placement on stairs, easy to maneuver for taller firefighters
- ◊ StreamShaper Guard – standard guard designed for larger setback, air cone guard available by request
- ◊ Fold Down Ergonomic Handle – folds down within frame for storage, easy grip with heavy duty gloves
- ◊ 5 Year Warranty



7 SERIES

Classic true full roll cage design that has proven itself over the years
 – durable steel frame, 4-position tilt lever

16" Blades - H x W x D: 20" x 20.5" x 16" - 508mm x 521mm x 406mm

Model	Weight	Engine	Displacement	RPM	Set Back	Angle	Output
716G4-H	74 lbs 34 kg	Honda GX120	118 cc	3530	6 ft 1.8 m	18°	11,740 cfm 19,945 cmh
716GC	70 lbs 32 kg	Honda GC160	160 cc	3775	6 ft 1.8 m	18°	10,230 cfm 17,380 cmh
716G4-B	68 lbs 31 kg	Briggs & Stratton	127 cc	3450	6 ft 1.8 m	18°	9940 cfm 16,890 cmh

18" Blades - H x W x D: 22" x 23.5" x 19.5" - 559mm x 597mm x 495mm

Model	Weight	Engine	Displacement	RPM	Set Back	Angle	Output
718G4-H	86 lbs 39 kg	Honda GX200	196 cc	3535	6 ft 1.8 m	18°	15,590 cfm 26,490 cmh
718GC	78 lbs 35.5 kg	Honda GC160	160 cc	3360	6 ft 1.8 m	18°	14,810 cfm 25,160 cmh
718G4-B	84 lbs 38 kg	Vanguard by Briggs & Stratton	205 cc	3770	6 ft 1.8 m	18°	15,350 cfm 26,080 cmh

20" Blades - H x W x D: 25.5" x 26" x 19.5" - 648mm x 660mm x 495mm

Model	Weight	Engine	Displacement	RPM	Set Back	Angle	Output
720G4-H	96 lbs 44 kg	Honda GX200	196 cc	3350	6 ft 1.8 m	18°	18,580 cfm 31,570 cmh
720GC	88 lbs 40 kg	Honda GC160	160 cc	3185	6 ft 1.8 m	18°	17,650 cfm 29,990 cmh
720G4-B	94 lbs 43 kg	Vanguard by Briggs & Stratton	205 cc	3385	6 ft 1.8 m	18°	18,060 cfm 30,685 cmh

24" Blades - H x W x D: 28" x 29.5" x 21" - 711mm x 749mm x 533mm

Model	Weight	Engine	Displacement	RPM	Set Back	Angle	Output
724G4-H	134 lbs 61 kg	Honda GX270	270 cc	3435	6 ft 1.8 m	18°	20,920 cfm 35,545 cmh
724G4-B	120 lbs 55 kg	Briggs & Stratton	306 cc	3245	6 ft 1.8 m	18°	21,100 cfm 35,850 cmh

Features

- ↻ 7-Point Cast Aluminum Blade – holds up better than plastic in high heat
- ↻ Precision Spun Steel Shroud – durability with maximum airflow
- ↻ Full Roll Cage Steel Frame – protects key components
- ↻ Flat Proof Tires – heavy duty rubber, never flat, rolls up stairs and curbs
- ↻ 4-Position Tilt Frame – -10°, 0°, 10°, 20°
- ↻ Air Cone Guard – classic design for maximum airflow, StreamShaper guard optional
- ↻ Fold Down Handle – folds down within frame for storage, easy grip with heavy duty gloves
- ↻ 5 Year Warranty



Battery PPV'S

VALOR

The Valor Series is the latest in PPV innovations from Super Vac. Featuring a Patent Pending frame design that is simple and intuitive to position on the fireground, the Valor series is engineered to ease the toughest ventilation challenges.

They feature a tough, tubular aluminum frame (15% lighter than previous models), full width handle, real rubber never-flat tires. 5-position tilt via the quick step pad, and the ability to easily attach ducting to the output. The Valor was also designed to be more versatile. With the addition of the 5-position step pad, this PPV easily can be placed on stairs eliminating problems previously encountered on 1 and 2 step entry ways and front porches. The Valor also keeps firefighter safety in mind. Not only are the heavy duty tires tough enough to maneuver curbs and debris, found on scene, they are also strategically place on the back of the frame so you never need to put yourself between the PPV and the fire during set-up.

Features

- AMCA, Air Movement and Control Association licensed airflow - Ratings listed below are based on tests and procedure in accordance with AMCA publication 211 and comply with the AMCA certified ratings program
- 7-Point Cast Aluminum Blade – better than plastic in high heat
- Full Roll Cage Aluminum Frame – protects key components – 15% lighter than steel frames
- Flat Proof Tires – heavy duty rubber, never flat, rolls up stairs and curbs
- Can charge while running on AC power
- 5-Position Tilt Frame – positive and negative angles allow for placement on stairs, easy to maneuver for taller firefighters
- StreamShaper Guard produces a tight column of air for further set-back
- Fold Down Ergonomic Handle – folds down within frame for storage, easy grip with heavy duty gloves
- 5 Year Warranty



18" Blades - H x W x D: 23" x 22" x 22" - 585mm x 560mm x 560mm

Model	Weight	Motor	RPM	Runtime	Set back	Angle	Output
V18-b	95 lbs 43kg	Leeson, variable speed, 24VDC	2477	25 minute battery on continuous 120VAC	9 ft 2.7m	10	8,699 cfm 14,780 cmh

WT SERIES

Water powered positive pressure ventilation fan that are powered by water turbine motors. These units run without the use of electricity or gasoline making them great in explosive locations with unknown gasses.

18" Blades - H x W x D: 21.75" x 22.5" x 18.75" - 552mm x 575mm x 476mm

Model	Weight	Power	Output
718WT	76lbs 34.5kg	5.5 hp water turbine 100-250psi	16,830 cfm 28,595 cmh

20" Blades - H x W x D: 25.5" x 25.5" x 18.75" - 648mm x 648mm x 476mm

Model	Weight	Power	Output
724WT	88lbs 40kg	5.5 hp water turbine 100-250 psi	22,470 cfm 38,175 cmh

24" Blades - H x W x D: 27.75" x 29" x 21" - 705mm x 737mm x 533mm

Model	Weight	Power	Output
730WT	102 lbs 46.5 kg	12 hp water turbine 100-250 psi	24,800 cfm 42,135 cmh

30" Blades - H x W x D: 31" x 28.75" x 27" - 787mm x 730mm x 686mm

Model	Weight	Power	Output
720WT	78lbs 35.5 kg	12 hp water turbine 100-250 psi	19,650 cfm 33,385 cmh

- 7-Point Cast Aluminum Blade – holds up better than plastic in high heat
- Precision Spun Steel Shroud – durability with maximum airflow
- Full Roll Cage Steel Frame – protects key components
- Flat Proof Tires – heavy duty rubber, never flat, rolls up stairs and curbs
- 4-Position Tilt Frame – -10°, 0°, 10°, 20°
- Step Brake – locks fan in place during use
- Air Cone Guard – classic design for maximum airflow, StreamShaper guard optional
- Fold Down Handle – folds down within frame for storage, easy grip with heavy duty gloves
- 5 Year Warranty



LIGHT KITS

Light kits saves manpower from setting up separate lighting tripods

PPV Accessories

for Valor PPV Handles

Two LEDs mounted inside the handle of a Valor PPV. These lights are deployed automatically every time the handle is lifted on the fan.



LED for Electric or Honda powered PPVS

The LED PPV light kit adds a 12 watt spot/combo LED to any electric or Honda GX200 powered PPV. These LEDs are mounted to the fold-down handle and add 1/2" (13mm) height to the stowed dimensions.



PPV DUCT

This is the highest quality duct made. These durable and long lasting come in standard or static dissipating material for explosive environments. Hot melt wear strips cover the helix for added durability. All ducts come with a built-in storage bag for easy transportation.

This duct is ideal for moving large quantities of air into hard to reach places using positive pressure and will fit on any Super Vac PPV. This duct can also be used as an extension to create a longer duct when attached to another Super Vac spiral duct.

Standard Duct

Model	Diameter	Length
12x20BC1	12" – 305mm	20' – 6.1m
16x20BC1	16" – 406mm	20' – 6.1m
20x20BC1	20" – 508mm	20' – 6.1m
24x20BC1	24" – 610mm	20' – 6.1m

Hazardous Location Duct

Model	Diameter	Length
12x20HZ1	12" – 305mm	20' – 6.1m
16x20HZ1	16" – 406mm	20' – 6.1m
20x20HZ1	20" – 508mm	20' – 6.1m
24x20HZ1	24" – 610mm	20' – 6.1m



EXHAUST EXTENSION / HEAT SHIELD

The Super Vac Exhaust Extension has been specifically designed to get a majority of the exhaust emissions from the gasoline engine away from the intake of a PPV fan by taking the emission out of the airstream.



The Super Vac Heat Shield slips over the Exhaust Extension and protects personnel from hot metal hose burns.



FOAM GENERATOR

The High Expansion Foam Generator is capable of producing foam up to an expansion rate of 1000:1 for tough extinguishments including flammable liquids, mining operations, and ship hold areas. It attaches easily to any Super Vac PPV.

Includes a 30 GPM in-line educator, metal shroud, and foam expansion netting.

Available for PPV's from 18" – 24" - Can be ordered in either red or blue.



TINY TACH

Easily install a digital tachometer and hourometer to any gas powered PPV.



VINYL COVER

Protect your Super Vac PPV with a vinyl fan cover. Please specify model number when ordering.

Available in Red or Yellow for all size PPVs up to 30"



CHEVRON DECAL

Improve visibility by adding a reflective Chevron Decal to any PPV. Available in Red/Yellow and Red/White



RUNNING BOARD MOUNT

These mounts allow you to carry a Super Vac fan on the running board off your vehicle, for fast removal at the scene. They provide a secure, positive hold for the protection of equipment and personnel. Running Board Mounts can also be used to lock PPVs in place within a compartment.



IONPAC 2.0

A spare battery pack for either the 718B or the P164B. Lasts up to 1000 cycles, runs for 30 min, up to 2 hours (depending on fan speed).

Weight – 31 lbs



Large Scale PPVs

SVU

The SVU is the most versatile, large-scale positive pressure ventilator in the industry. With a wide array of configurations, this PPV is perfect for ventilating large warehouses, commercial structures, high-rise buildings, airports, and mass rehabilitation areas.

Gas Engine

Engine – Subaru 2.5L – 4 Cylinder
Performance – 165 Hp – 123kW
HxWxD – 70" x 70" x 42" – 178cm x 178cm x 107cm
Blade Diameter – 48" – 122cm
RPM – 4200
Fuel Consumption – 5 gph – 19L/hr
Fuel Tank Capacity – 10 g – 38L
Output (Shroud) – 125,000 cfm – 212,375 cmh
Output (Venturi) – 250,000 cfm – 424,750 cmh

Diesel Engine

Engine – Isuzu 3.0 Diesel
Performance – 130 Hp – 97kW
HxWxD – 70" x 70" x 42" – 178cm x 178cm x 107cm
Blade Diameter – 48" – 122cm
RPM – 2450
Fuel Consumption – 4.5 gph – 17L/hr
Fuel Tank Capacity – 18 g – 68L
Output (Shroud) – 100,000 cfm – 169,900 cmh
Output (Venturi) – 200,000 cfm – 339,800 cmh



Features

- ◊ 6-Point Carbon Fiber Blade – 48 inch diameter
- ◊ Choice of Direct Drive engine – Subaru 4 cylinder or Isuzu diesel
- ◊ Customize to Fit your Department's Needs
 - ◊ Misting Ring – 30 GPM at 60psi
 - ◊ Electric Turntable – rotate fan up to 270°
 - ◊ Scissor Lift – extend 65" in the air, tilt 20° up and down
 - ◊ LED Lighting Packages
- ◊ Mounting Options
 - ◊ Custom Trailer
 - ◊ Skid Unit
 - ◊ Truck and Flatbed
 - ◊ Built in the USA
- ◊ 1 Year Warranty



730G4-H

a portable, gas powered PPV that is a serious workhorse to make quick work of ventilating larger occupancies.

30" Blade - H x W x D: 39" x 37" x 27.5" - 991mm x 940mm x 699mm

Model	Weight	Engine	Displacement	RPM	Setback	Angle	Output
730G4-H	163 lbs 74 kg	Honda GX390	389 cc	3220	6 ft 1.8m	10°	26,849 cfm 45,616 cmh

Features

- ◊ 7-Point Cast Aluminum Blade – holds up better than plastic in high heat
- ◊ Precision Spun Steel Shroud – durability with maximum airflow
- ◊ Full Roll Cage Steel Frame – protects key components
- ◊ Flat Proof Tires – heavy duty rubber, never flat, rolls up stairs and curbs with “zero catch-point” design
- ◊ Step Brake – locks fan in place during use
- ◊ Air Cone Guard – classic design for maximum airflow
- ◊ 5 Year Warranty

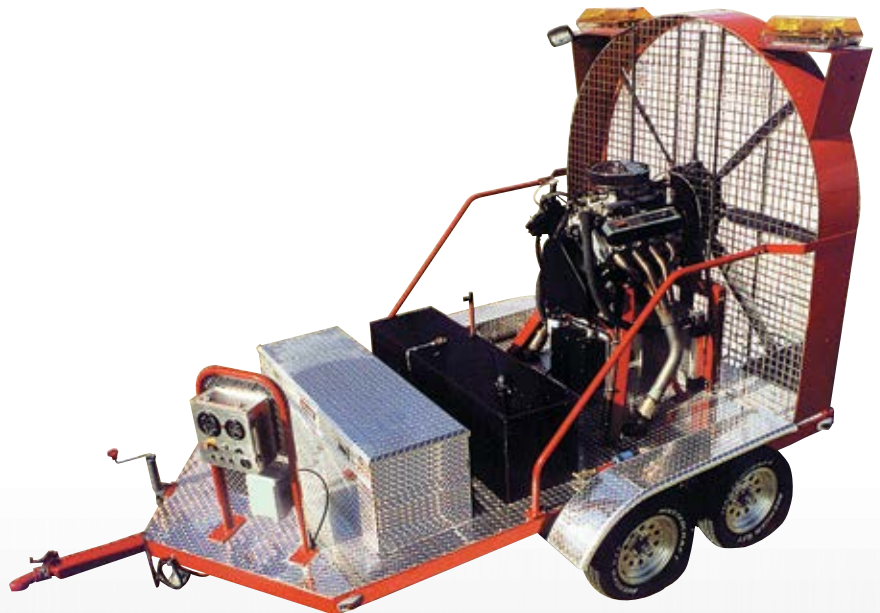


BFF

The BFF is the largest mobile emergency ventilation fan on the market with capabilities of blowing over 750,000 CFM. The BFF is the solution for the largest ventilation challenges including shopping malls, sports complexes, airports, tunnels, and retail super stores.

Features / Specs

- ◊ 7-Point Carbon Fiber Blade – 80" Diameter
- ◊ HxWxD – 88" x 84" x 60"
- ◊ Mounted to Truck or Trailer
- ◊ Gas or Diesel Engine Options (200 - 600 Hp)
- ◊ Built in USA
- ◊ 1 Year Warranty
- ◊ *Every BFF is built specifically for each customer. There are many options as far as engine, controls, LED lighting etc.*



Have a specific idea or solution? Let us know, we can build custom solutions for specific large ventilation challenges.

Smoke Ejectors

Box shaped fans used to pull smoke from a structure using negative pressure. Smoke ejectors are most effective when working with natural air flow and not against mother nature. Smoke Ejectors are versatile as they can also be flipped around to use positive pressure tactics when needed.

ELECTRIC

Features

- ◊ Patented 4-tip recurve Aluminum Blade – holds up better than plastic in high heat
- ◊ Precision Balanced Blade – maximizes output
- ◊ Rubber Feet – heavy duty rubber adds friction to keep fan in place
- ◊ 4 Carry Handles – makes transportation easy with 1 or 2 people
- ◊ Front and Rear Guards – prevents accidental contact with key components
- ◊ 5 Year Warranty



12" Blades - H x W x D: 15.5" x 15" x 13" - 394mm x 381mm x 330mm

Model	Weight	Motor	RPM	Start	Run	Output
P124S	40 lbs 18 kg	Bluffton, single speed, TEAO, 1/2 Hp, 60/50hz, 115/230V	3450	2000 w 15 amp circuit	800 w	Shroud: 2590 cfm - 4400 cmh Venturi: 3700 cfm - 6285 cmh
P124SE	42 lbs 19 kg	Bluffton, single speed, hazardous location rated for Group 1 Class D, 1/2 Hp, 60hz, 115/230V	3450	2000 w 15 amp circuit	800 w	Shroud: 2590 cfm - 4400 cmh Venturi: 3700 cfm - 6285 cmh

16" Blades - H x W x D: 19.25" x 18.75" x 13" - 489mm x 477mm x 330mm

Model	Weight	Motor	RPM	Start	Run	Output
P164S	44 lbs 20 kg	Bluffton, single speed, TEAO, 1/3 Hp, 60/50hz, 115/230V	1725	2000 w 15 amp circuit	700 w	Shroud: 3200 cfm - 5435 cmh Venturi: 5200 cfm - 8835 cmh
HF164	59 lbs 27 kg	Bluffton, single speed, TEAO, 1-1/2 Hp, 60hz, 115/230V	3450	6000 w 20 amp circuit	2100 w	Shroud: 4950 cfm - 8410 cmh Venturi: 9620 cfm - 16,345 cmh
P164SE	49 lbs 22 kg	Bluffton, single speed, hazardous location rated for Group 1 Class D, 1/3 Hp, 60hz, 115/230V	1725	2000 w 15 amp circuit	700 w	Shroud: 3200 cfm - 5435 cmh Venturi: 5200 cfm - 8835 cmh
HF164E	63 lbs 28.5 kg	Bluffton, single speed, hazardous location rated Class 1 Group D, 1-1/2 Hp, 60hz, 115/230V	3450	6000 w 20 amp circuit	2100 w	Shroud: 4950 cfm - 8410 cmh Venturi: 9620 cfm - 16,345 cmh
Model	Weight	Motor	Run Time		Output	
P164b	35 lbs 16 kg	Leeson, variable speed, 1 Hp, 24V Lithium Ion Battery Battery adds 31 lbs (14 kg)	30 min - 120 min - 1000 cycles can be plugged into 115V AC		Shroud: 3200 cfm - 5435 cmh Venturi: 5200 cfm - 8835 cmh	

20" Blades - H x W x D: 25.5" x 24.75" x 16.25" - 648mm x 629mm x 413mm

Model	Weight	Motor	RPM	Start	Run	Output
P200S	85 lbs 38.5 kg	Bluffton, single speed, TEAO, 1 Hp, 60hz, 115/230V	1725	4000 w 15 amp circuit	1500 w	Shroud: 5840 cfm - 9925 cmh Venturi: 9800 cfm - 16,650 cmh
P200SE	93 lbs 42 kg	Bluffton, single speed, hazardous location rated for Group 1 Class D, 1 Hp, 60hz, 115/230V	1725	4000 w 15 amp circuit	1500 w	Shroud: 5840 cfm - 9925 cmh Venturi: 9800 cfm - 16,650 cmh

24" Blades - H x W x D: 28.5" x 28" x 18.75" - 724mm x 711mm x 477mm

Model	Weight	Motor	RPM	Start	Run	Output
P244S	110 lbs 50 kg	Bluffton, single speed, TEAO, 1-1/2 Hp, 60hz, 115/230V	1725	6000 w 20 amp circuit	2100 w	Shroud: 7790 cfm - 13,235 cmh Venturi: 11,800 cfm - 20,050 cmh
P244SE	115 lbs 52 kg	Bluffton, single speed, hazardous location rated for Group 1 Class D, 1-1/2 Hp, 60hz, 115/230V	1725	6000 w 20 amp circuit	2100 w	Shroud: 7790 cfm - 13,235 cmh Venturi: 11,800 cfm - 20,050 cmh

*RPM is at 60Hz – for 50Hz – RPM and output should be multiplied by 5/6

GAS

The smallest gas powered fan in the industry. This fan can fit into tight compartments, yet has the CFM output of a 20" electrical smoke ejector due to its powerful Honda GX engine

16" Blade - H x W x D: 19.5" x 19" x 15.5" - 495mm x 483mm x 394mm

Model	Weight	Engine	Displacement	RPM	Output
GP164S	55 lbs 25 kg	Honda GX120	118 cc	3500	9250 cfm 15,715 cmh

Features

- ◊ 7-Point Aluminum Blade – holds up better than plastic in high heat
- ◊ Precision Balanced Blade – maximizes output
- ◊ Rubber Feet – heavy duty rubber adds friction to keep fan in place
- ◊ 4 Carry Handles – makes transportation easy with 1 or 2 people
- ◊ Front and Rear Guards – prevents accidental contact with key components
- ◊ 5 Year Warranty



WT SERIES

Water smoke ejectors that are powered by water turbine motors. These units run without the use of electricity or gasoline making them great in explosive locations with unknown gasses.

12" Blades - H x W x D: 15.5" x 15" x 13" - 394mm x 381mm x 330mm

Model	Weight	Power	Consumption	Output
P124WT	50 lbs - 23 kg	5.5 Hp Water Turbine - 100 - 250 PSI	65 gpm	4300 cfm - 7305 cmh

16" Blades - H x W x D: 19.25" x 18.75" x 13" - 489mm x 477mm x 330mm

Model	Weight	Power	Consumption	Output
P164WT	57 lbs - 26 kg	5.5 Hp Water Turbine - 100 - 250 PSI	65 gpm	9950 cfm - 16,905 cmh

20" Blades - H x W x D: 25.5" x 24.75" x 16.25" - 648mm x 629mm x 413mm

Model	Weight	Power	Consumption	Output
P200WT	88 lbs - 40 kg	5.5 Hp Water Turbine - 100 - 250 PSI	65 gpm	10,800 cfm - 18,350 cmh

24" Blades - H x W x D: 28.5" x 28" x 18.75" - 724mm x 711mm x 477mm

Model	Weight	Power	Consumption	Output
P244WT	123 lbs - 56 kg	5.5 Hp Water Turbine - 100 - 250 PSI	65 gpm	14,200 cfm - 24,125 cmh

Features

- ◊ 7-Point Aluminum Blade – holds up better than plastic in high heat
- ◊ 2 Fitting Sizes – select 1.5" or 2.5" hose fittings
- ◊ Precision Balanced Blade – maximizes output
- ◊ Rubber Feet – heavy duty rubber adds friction to keep fan in place
- ◊ 4 Carry Handles – makes transportation easy with 1 or 2 people
- ◊ Front and Rear Guards – prevents accidental contact with key components
- ◊ 5 Year Warranty



Smoke Ejector Accessories

SPIRAL DUCT

This is the highest quality duct made. These durable and long lasting ducts come in standard or static dissipating material for explosive environments. Hot melt wear strips cover the helix for added durability. All ducts come with a built-in storage bag for easy transportation.

This duct is ideal for moving large quantities of air into hard to reach places using positive pressure and will fit on any Super Vac smoke ejector with the correct adapter. This duct can also be used as an extension to create a longer duct when attached to another Super Vac spiral duct.

Standard Duct with adapter

Model	Diameter	Length
12x20AD1	12" - 305mm	20' - 6.1m
16x20AD1	16" - 406mm	20' - 6.1m
20x20AD1	20" - 508mm	20' - 6.1m
24x20AD1	24" - 610mm	20' - 6.1m

For duct only (no adapter) models end with BC1



Duct Adapter

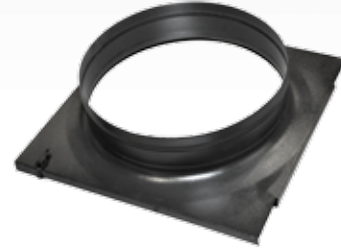
The duct adapter helps you attach any kind of spiral duct with a belted cuff to a smoke ejector. It simply fits over the edge of the fan and secures using two clasps.

Available for 12"-24" smoke ejectors.

Hazardous Location Duct with adapter

Model	Diameter	Length
12x20HZAD	12" - 305mm	20' - 6.1m
16x20HZAD	16" - 406mm	20' - 6.1m
20x20HZAD	20" - 508mm	20' - 6.1m
24x20HZAD	24" - 610mm	20' - 6.1m

For duct only (no adapter) models end with HZ1



DOOR BAR / HANGER

The door bar allows you to hang a Super Vac fan with hangers in any doorway or window opening at any height.

Range - 26" - 60"

Weight - 13 lbs

Extension Bar comes Standard



The hanger allows any smoke ejector to be installed almost anywhere- doors, ladders, windows, casements, archways, and more. Used in conjunction with the Door Bar, they permit placing at any height.



FOAM GENERATOR

The High Expansion Foam Generator is capable of producing foam up to an expansion rate of 1000:1 for tough extinguishments including flammable liquids, mining operations, and ship hold areas. It attaches easily to any Super Vac smoke ejector.

Includes a 30 GPM in-line educator, metal shroud, and foam expansion netting.

Can be ordered in either red or blue.



TILT FRAME

This bracket will help you point airflow precisely in any direction at any angle. It easily retrofits onto any existing Super Vac smoke ejector. Allows for quick setup and effortless tilting of the fan in any direction.

Available for 12" or 16" Super Vac smoke ejectors



RUNNING BOARD MOUNT

Running Board Mount - Smoke Ejector
These mounts allow you to carry a Super Vac fan on the running board off your vehicle, for fast removal at the scene. They provide a secure, positive hold for the protection of equipment and personnel. Running Board Mounts can also be used to lock smoke ejectors in place within a compartment.



VINYL COVER

Protect your Super Vac smoke ejector with a vinyl fan cover. Please specify model number when ordering.

Available in Red or Yellow for all size smoke ejectors up to 24".



Rescue Saws are imperative to ventilating and rescue operations. Super Vac supplies departments with the ultimate saws for the fire/rescue industry, packed with features and specs with firefighters in mind.

CUTOFF SAWS

Come standard with a Tiger Tooth diamond blade specifically designed to rip through, concrete, steel, rebar, aluminum, along with residential and commercial roofing.

14" Blades (3/4" Arbor) - H x W x D: 15.25" x 30" x 11" - 387mm x 762mm x 280mm

Model	Weight	Engine	RPM	Cutting Depth	Fuel Capacity
SVC4	19.6 lbs - 8.9 kg	Makita, 2-stroke, 60.7cc 4.3 BHP – 3.2 kw	9850	5.1" - 130 mm	23.6 oz - .7 L

Features

- ◊ Tiger Tooth Diamond Studded Blade – specifically designed for the toughest of jobs
- ◊ Easy Start – spring assisted starter and primer pump combined with optimized engine management significantly reduces resistance
- ◊ Touch & Stop – one lever control with clearly defined positions for cold starting, operation and stop. Engines shuts off with just a touch.
- ◊ Aluminum Pull Handle – durable and designed with thick rescue gloves in mind
- ◊ Ultimate Debris System – dirt/debris separation rate of 90%
- ◊ Vertical Fuel Filling – prevents spilling, built in window to check fuel level on the fly
- ◊ Multi-Ribbed Belt – for high power transmission and endurance
- ◊ Water Supply Inlet – with intake filter and fine adjustments for adequate dust protection
- ◊ 2 Year Warranty



Kits available for any saw



CHAIN SAWS

First choice of many departments to tackle a variety of operations including cutting through residential roofing, removing downed trees, and more

Chain Saws can come with choice of a full wrap depth guard for added protection or the Quick Silver depth guard for ease of use and reduced weight.

16" Bar - H x W x D: 11.25" x 13" x 34.5" - 286mm x 330mm x 876mm

Model	Depth Gauge	Weight	Engine	RPM	Pitch / Gauge (in)	Fuel Capacity
SV3-16	Full	20.8 lbs - 9.5 kg	Makita, 2-stroke, 78.5cc 5.7 BHP – 4.3 kw	12,800	.404 / .050	25.36 oz - .75 L
SV3-16-QS	Quick Silver					

20" Bar - H x W x D: 11.25" x 13" x 38.5" - 286mm x 330mm x 978mm

Model	Depth Gauge	Weight	Engine	RPM	Pitch / Gauge (in)	Fuel Capacity
SV3-20	Full	21.6 lbs - 9.8 kg	Makita, 2-stroke, 78.5cc 5.7 BHP – 4.3 kw	12,800	.404 / .050	25.36 oz - .75 L
SV3-20-QS	Quick Silver					

Features

- ◊ Chisel Chain – .404 carbide tooth chain takes big bites out or multiple layers
- ◊ Easy Start – includes momentary contact switch that leaves the saw in the ON position, a compression release that reduces cylinder pressure by 50% and a choke knob that simultaneously sets the throttle and choke
- ◊ Aluminum Pull Handle – durable and designed with thick rescue gloves in mind
- ◊ Airmaster Filtration System – 3 chambered system stops large particles before they reach the secondary filter
- ◊ Full Wrap Handle – makes front facing and overhead operations easier
- ◊ Lateral Chain Tensioning – developed for fast, and on-the-go adjustments
- ◊ 2 Year Warranty



Full Depth Guard



QS Depth Guard

Environmental Control

SmokeBlockAid

A patented device that assists in life safety and property conservation by containing smoke to a particular room while (US Patent # 7810576) using no manpower. It also allows personnel to pass through doorways without closing the door behind them.

Specs

Model	Min Width	Max Width	Height	Material	Ratchet
Standard	27" - 68.5 cm	43" - 109 cm	75" - 1.9 m	replaceable silicone impregnated fiberglass rated up to 500° F for extended period of time. Fabric maintains integrity up to 1100° F	QuickAction with screw tightening
XL	36" - 91 cm	56" - 142 cm	75" - 1.9 m		

Features

- ◊ controls oxygen to the fire without taking up manpower
- ◊ drastically minimizes the conditions that lead to flashover
- ◊ great visual indicator of flow path
- ◊ fire fighters and charged hose lines can pass through while BlockAid is deployed
- ◊ reduces smoke damage
- ◊ prevents smoke spread in large buildings and apartment complexes
- ◊ eliminates smoke in common areas to help with rescue operations
- ◊ replaceable fabric rated up to 500°F



MISTER FAN

16" Blades - H x W x D: 19.75" x 18.75" x 13" - 502mm x 477mm x 330mm

Model	Weight	Motor	RPM	Start	Run	Output
F164M	41 lbs 18.5 kg	Bluffton, single speed, TEAO, 1/3 Hp, 60/50hz, 115/230V	1725	2000 w 15 amp circuit	700 w	Shroud: 3200 cfm - 5435 cmh Venturi: 5200 cfm - 8835 cmh

requires 2g / hr water supply via garden hose or auxiliary line to produce mist through 3 built in misting nozzles

Features

- ◊ (3) Built In Misting Rings – made of aluminum to prevent rust, connects to any garden hose or auxiliary line
- ◊ Rubber Feet – heavy duty rubber adds friction to keep fan in place
- ◊ Reduces ambient air stream by 30° F
- ◊ 4 Carry Handles – makes transportation easy with 1 or 2 people
- ◊ Can be used as electric smoke ejector – as powerful as the P164S
- ◊ Front and Rear Guards – prevents accidental contact with key components
- ◊ Patented 4-tip recurve Aluminum Blade – holds up better than plastic in high heat
- ◊ 5 Year Warranty
- ◊ Precision Balanced Blade – maximizes output



MOUNTAIN MISTER

The Mountain Mister can convert any fan into a cooling unit for rehabilitating during hot summer days. Simply, attach the Mountain Mister to the outlet guard of a fan and give it a water source via a garden hose or an auxiliary line from a pump panel on any fire/rescue apparatus, and this unit will now provide relief and prevent heat stress.

Versatility is a key feature as the Mountain Mister can be attached to any fan (smoke ejector, blower/exhauster, PPV) or can be used totally by itself hung under an awning or from a shade tree. It saves space and money, and is also extremely efficient as it only consumes 3 gallons of water per hour. Options include Storz connection and magnetic version for StreamShaper guards.



RAPID TENT

The Rapid Tent is a perfect solution for when your department is in need of shelter during long hours on scene. Sets up quickly with ease. Can be deployed in under one minute. Units can even be combined to double floor space and each comes standard with front and rear doors to prevent congestion.

HxWxD – 7.5 ft x 10 ft x 10 ft – 100 sq ft of floor space, 7.5 ft of headroom

Stowed HxWxD – 10" x 10" x 88"



HEAT PAC 25

The HeatPac25 provides fresh warm air at a temperature rise of 80° over ambient. A great pair with the Super Vac Rapid Tent. Featuring an 8" blower and CGA approved heater, the unit is portable and connects to a standard propane tank. The supplied 25ft of duct allows you to deliver warm air with precision.

HxWxD – 15.25" x 33" x 13.5"

Weight – 50 lbs

BTUs Output – 70,000



CLOUD 9

Mineral Oil based machines are environmentally friendly and are capable of producing huge amounts of pure white smoke that cause no breathing discomfort, have superior hang time, and leave no slippery residue after use.

Mineral Oil Based (requires Super Vac Cloud 9 fluid) - H x W x D: 28" x 28.5" x 20.5" - 711mm x 724mm x 521mm

Model	Weight	Outlets	Power Requirements	Fluid Tank	Fluid Consumption	Output
S-975	132 lbs - 60 kg	1	115V AC - 1400 w	.67 g - 2.5 L	.33 gph - 1.25 L /hr	2500 cfm - 4250 cmh
S-995	132 lbs - 60 kg	2	230V AC - 1400 w	.67 g - 2.5 L	.33 gph - 1.25 L /hr	5000 cfm - 8495 cmh

Features

- ◊ Mineral Oil Based – does not leave a slippery residue, no breathing discomfort
- ◊ Automatic Cleaning Cycle – runs every time machine is used
- ◊ Fold Down Frame and Rear Mounted Tires – durable, easy transportation and storage
- ◊ 100% Self Contained – CO2 bottle, fogger, fluid, remote control all stay within frame for protection
- ◊ CO2 Propellant – faster, more reliable than a pump



S-975

LONDON FOGGER

Glycol based machines are more traditional, are time tested, and are more economical than mineral based machines. Glycol based smoke machines have been around for many years and have been the trusted choice for many departments.

Glycol Based (requires Super Vac London Fogger fluid) - H x W x D: 10" x 20" x 9" - 254mm x 508mm x 229mm

Model	Weight	Outlets	Power Requirements	Warm Up Time	Fluid Consumption	Output
S-575	26 lbs - 12 kg	1	115V AC - 1400 w	10 min	35 oz/hr - 1035 ml /hr	1800 cfm - 3060 cmh
S-585	26 lbs - 12 kg	1	230V AC - 1400 w	10 min	35 oz/hr - 1035 ml /hr	1800 cfm - 3060 cmh
S-595	26 lbs - 12 kg	2	230V AC - 1400 w	10 min	70 oz/hr - 2070 ml /hr	3600 cfm - 6115 cmh

Features

- ◊ Glycol Based – a proven choice trusted by departments world-wide
- ◊ Remote Control – 50 ft extension cord
- ◊ Light Weight, Compact – easy transportation and storage
- ◊ Auto Extract System – prevents residual buildup, clogging, and incidental puffing – longer life than other pump based foggers



S-575

Confined Space

F SERIES

Confined Space Ventilators by Super Vac have unmatched durability and will last for years. The entire frame is constructed of steel and the patented 4 tip recurve blade is made of aluminum and precision balanced maximizing output.

Available motors are Single Speed, Single High Speed, Variable Speed, and Pneumatic.

Features

- ◊ Patented 4-tip recurve Aluminum Blade – holds up better than plastic in high heat
- ◊ Precision Balanced Blade – maximizes output
- ◊ Rubber Feet – heavy duty rubber adds friction to keep fan in place
- ◊ 4 Carry Handles – makes transportation easy with 1 or 2 people
- ◊ Front and Rear Guards – prevents accidental contact with key components
- ◊ 5 Year Warranty



12" Blades - H x W x D: 15.5" x 15" x 13" - 394mm x 381mm x 330mm * Af & Vf models add 5" (127 mm) to Height

Model	Weight	Motor	RPM	Start	Run	Output
F124	40 lbs 18 kg	Bluffton, single speed, TEAO, 1/3 Hp, 60/50hz, 115/230V	1725	2000 w 15 amp circuit	800 w	Shroud: 1300 cfm - 2210 cmh Venturi: 2100 cfm - 3570 cmh
HF124	40 lbs 18 kg	Bluffton, single speed, TEAO, 1/2 Hp, 60/50hz, 115/230V	3450	2000 w 15 amp circuit	800 w	Shroud: 2590 cfm - 4400 cmh Venturi: 3700 cfm - 6285 cmh
F124E	42 lbs 19 kg	Bluffton, single speed, hazardous location rated for Group 1 Class D, 1/3 Hp, 60hz, 115/230V	1725	2000 w 15 amp circuit	800 w	Shroud: 1300 cfm - 2210 cmh Venturi: 2100 cfm - 3570 cmh
HF124E	42 lbs 19 kg	Bluffton, single speed, hazardous location rated for Group 1 Class D, 1/2 Hp, 60hz, 115/230V	3450	2000 w 15 amp circuit	800 w	Shroud: 2590 cfm - 4400 cmh Venturi: 3700 cfm - 6285 cmh
VF124	40 lbs 18 kg	Bluffton, variable speed, TEAO, 1 Hp, 60 hz, 115/230V	2500	2000 w 15 amp circuit	800 w	Shroud: 1900 cfm - 3230 cmh Venturi: 3100 cfm - 5265 cmh
AF124	39 lbs 18 kg	Pneumatic, 1/2 Hp	2000	80 PSI - 27 cfm		Shroud: 2800 cfm - 4755 cmh Venturi: 3800 cfm - 6455 cmh

16" Blades - H x W x D: 19.25" x 18.75" x 13" - 489mm x 477mm x 330mm * Af & Vf models add 5" (127 mm) to Height

Model	Weight	Motor	RPM	Start	Run	Output
F164	44 lbs 20 kg	Bluffton, single speed, TEAO, 1/3 Hp, 60/50hz, 115/230V	1725	2000 w 15 amp circuit	700 w	Shroud: 3200 cfm - 5435 cmh Venturi: 5200 cfm - 8835 cmh
HF164	59 lbs 27 kg	Bluffton, single speed, TEAO, 1-1/2 Hp, 60hz, 115/230V	3450	6000 w 20 amp circuit	2100 w	Shroud: 4950 cfm - 8410 cmh Venturi: 9620 cfm - 16,345 cmh
F164E	49 lbs 22 kg	Bluffton, single speed, hazardous location rated for Group 1 Class D, 1/3 Hp, 60hz, 115/230V	1725	2000 w 15 amp circuit	700 w	Shroud: 3200 cfm - 5435 cmh Venturi: 5200 cfm - 8835 cmh
HF164E	63 lbs 28.5 kg	Bluffton, single speed, hazardous location rated Class 1 Group D, 1-1/2 Hp, 60hz, 115/230V	3450	6000 w 20 amp circuit	2100 w	Shroud: 4950 cfm - 8410 cmh Venturi: 9620 cfm - 16,345 cmh
VF164	52 lbs 23.5 kg	Bluffton, variable speed, TEAO, 1 Hp, 60 hz, 115/230V	2500	2000 w 15 amp circuit	800 w	Shroud: 3500 cfm - 5945 cmh Venturi: 5900 cfm - 10,025 cmh
AF164	45 lbs 20.5 kg	Pneumatic, 1-1/2 Hp	3600	100 PSI - 75 cfm		Shroud: 5100 cfm - 8665 cmh Venturi: 9600 cfm - 16,310 cmh

20" Blades - H x W x D: 25.5" x 24.75" x 16.25" - 648mm x 629mm x 413mm * Af & Vf models add 5" (127 mm) to Height

Model	Weight	Motor	RPM	Start	Run	Output
F200	85 lbs 38.5 kg	Bluffton, single speed, TEAO, 1 Hp, 60hz, 115/230V	1725	4000 w 15 amp circuit	1500 w	Shroud: 5840 cfm - 9925 cmh Venturi: 9500 cfm - 16,140 cmh
F200E	93 lbs 42 kg	Bluffton, single speed, hazardous location rated for Group 1 Class D, 1 Hp, 60hz, 115/230V	1725	4000 w 15 amp circuit	1500 w	Shroud: 5840 cfm - 9925 cmh Venturi: 9500 cfm - 16,140 cmh
VF200	88 lbs 40 kg	Bluffton, variable speed, TEAO, 1 Hp, 60 hz, 115/230V	2500	2000 w 15 amp circuit	800 w	Shroud: 6900 cfm - 11,720 cmh Venturi: 9800 cfm - 16,650 cmh
AF200	60 lbs 27 kg	Pneumatic, 1-1/2 Hp	3600	100 PSI - 75 cfm		Shroud: 6700 cfm - 11,380 cmh Venturi: 9800 cfm - 16,650 cmh

24" Blades - H x W x D: 28.5" x 28" x 18.75" - 724mm x 711mm x 477mm * Af model adds 5" (127 mm) to Height

Model	Weight	Motor	RPM	Start	Run	Output
F244	110 lbs 50 kg	Bluffton, single speed, TEAO, 1-1/2 Hp, 60hz, 115/230V	1725	6000 w 20 amp circuit	2100 w	Shroud: 7790 cfm - 13,235 cmh Venturi: 11,800 cfm - 20,050 cmh
F244E	115 lbs 52 kg	Bluffton, single speed, hazardous location rated for Group 1 Class D, 1-1/2 Hp, 60hz, 115/230V	1725	6000 w 20 amp circuit	2100 w	Shroud: 7790 cfm - 13,235 cmh Venturi: 11,800 cfm - 20,050 cmh
AF244	105 lbs 48 kg	Pneumatic, 5 Hp	2250	100 PSI - 100 cfm		Shroud: 9700 cfm - 16,480 cmh Venturi: 14,200 cfm - 24,125 cmh

*RPM is at 60Hz – for 50Hz – RPM and output should be multiplied by 5/6

NANO

The smallest confined space fans available.

Features

- ◊ 2 Carry Handles
- ◊ Duct can be Attached to Either End
- ◊ Can be Used for Negative or Positive Pressure Operations
- ◊ 5 Year Warranty

P8S



P8XE



8" Blades - H x W x D: 11.5" x 10.75" x 16" - 292mm x 273mm x 406mm

Model	Weight	Motor	Output
P8S	20 lbs - 9 kg	1/3 Hp, TEAO (Totally Enclosed Air Over), 60/50hz, 115/230V	1037 cfm - 1760 cmh
P8XE	22 lbs - 10 kg	1/3 Hp, hazardous location rated for Group 1 Class D, 60hz, 115/230V	1037 cfm - 1760 cmh

*RPM is at 60Hz - for 50Hz - RPM and output should be multiplied by 5/6

Nano Kits: P8S available as kit with 15 or 25 ft of standard duct
P8XE available as kit with 15 or 25 ft of static dissipating duct

DUCT

Standard Duct / Static Dissipating Duct

See pg 14 for Spiral Duct for F Series fans



"L" Duct

A simple, yet effective solution for confined space ventilation. This durable duct features an "L" shaped design, perfect for ventilating deep into manholes and other tight areas.

Featuring reinforced vinyl, "L" Ducts can be custom designed to any diameter as well as any horizontal length up to 25 ft and any vertical length up to 20 ft.

"L" Ducts are only to be used on discharge side of fan.



Nano Duct

This spiral duct is made specifically to fit the Nano series fans. These durable and long lasting ducts come in standard or static dissipating material for explosive environments. Hot melt wear strips cover the helix for added durability. All ducts come with a built-in storage bag for easy transportation.

8" diameter - choice of 15 or 25 ft length as well as standard or static dissipating



LFR Duct

An 8" "L" shaped duct designed for Nano fans created from a flame resistant, chemically stable material that exceeds NFPA 70E tests for flame travel.

3 ft horizontal section - 8 ft vertical section



MANHOLE ADAPTER

A great way for utility companies and more to place blowers/exhausters safely atop of manhole. These adapters allow negative pressure fans to pull smoke, toxic fumes and more from deep in the manhole.

These rugged aluminum adapters come in 4 sizes and sit in manhole rings to provide a stable mounting surface for box fans.

Note: Not for use if manhole is the only means of egress.

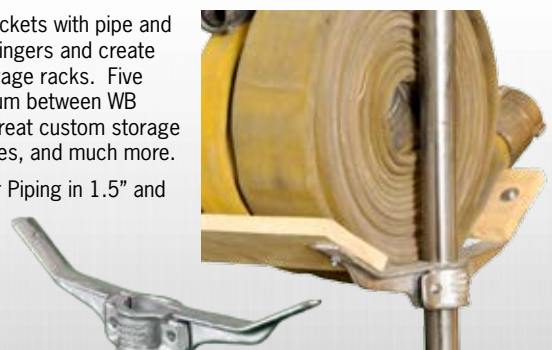
Available for 12" or 16" fans on 24" or 30" manholes



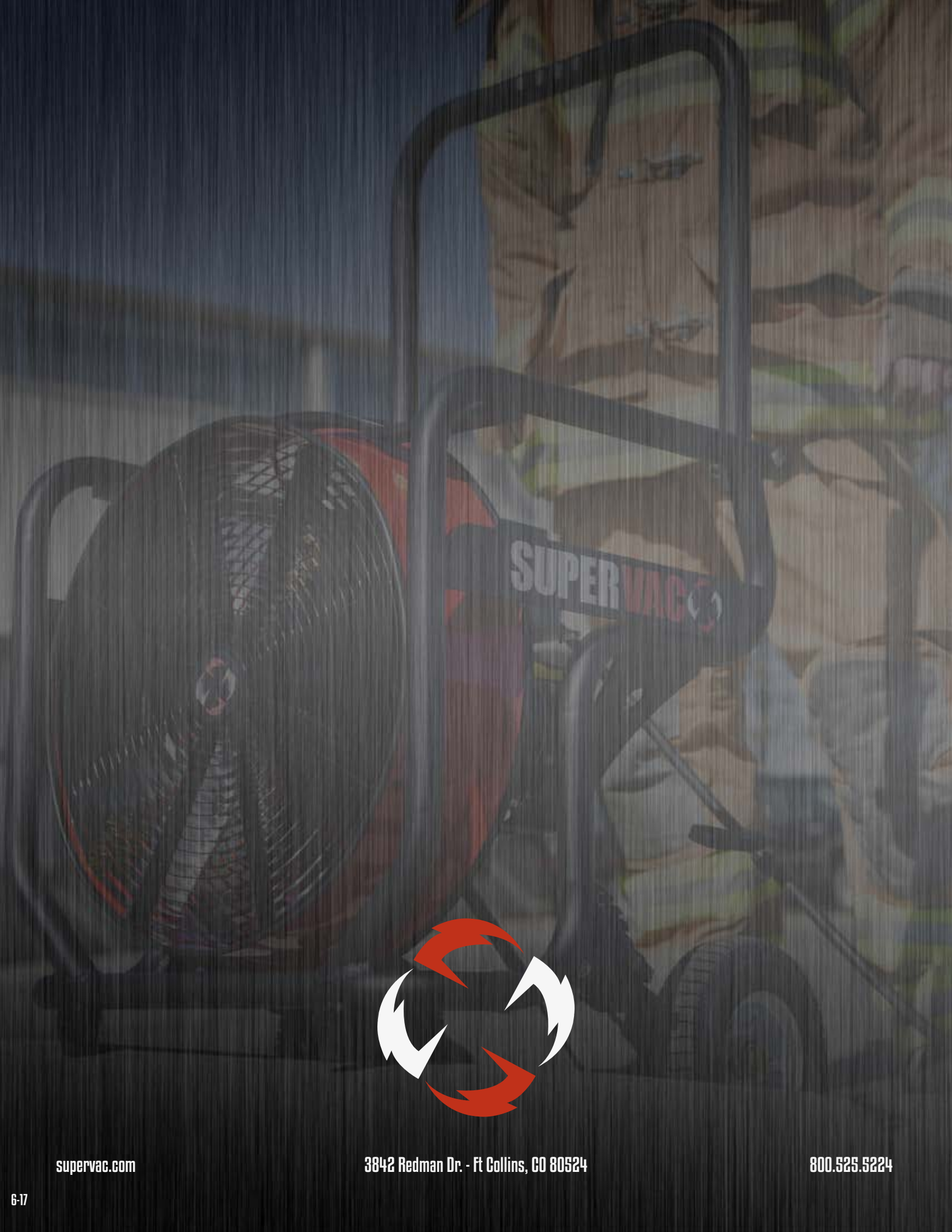
WB BRACKET

Use WB Brackets with pipe and 2x6s for stringers and create custom storage racks. Five foot maximum between WB Brackets. Great custom storage for hose, tires, and much more.

Available for Piping in 1.5" and 2" diameter



See pg 14 for Tilt Frame, Running Board Mounts, Vinyl Cover, Door Bar and Hangers



SUPERVAC

